



PRIME LANDS RESIDENCIES (PVT) LTD

#75, D. S. SENANAYAKE MAWATHA, COLOMBO 08

MONTHLY PROGRESS REPORT

PRIME RESIDENCIES AQUA
No 18/1, Temple Road. Nawala

JULY / 2017



MONTHLY PROGRESS REPORT- JULY 2017

PROJECT DETAILS

Project Architect : Arch.Thusara Waidyasekara	Contractor : SEIRRA Construction (Pvt) Ltd
Structural Engineer : Eng.K.V.G.G. Jayantha	Project Commenced Date – 2014/12/02
MEP Engineer : Eng. N.Sooriyaarachchi	Duration – 24 Months

CURRENT STATUS OF THE PROJECT

Floor	Work	H1	H2	H3	H4	H5	H6	H7
3 rd	Door Fixing	100%	100%	100%	100%	100%	100%	100%
	Painting	98%	98%	98%	98%	98%	98%	98%
	Tilling	100%	100%	100%	100%	100%	100%	100%
	Bathroom Fittings	80%	100%	80%	80%	80%	80%	80%
	Electrical Fittings	95%	100%	95%	95%	95%	95%	95%
4 th	Door fixing	100%	100%	100%	100%	100%	100%	100%
	Painting	95%	95%	95%	95%	95%	95%	95%
	Tilling	100%	100%	100%	100%	100%	100%	100%
	Bathroom Fittings	80%	80%	0%	80%	80%	80%	80%
	Electrical Fittings	80%	80%	80%	80%	80%	80%	80%
5 th	Door fixing	100%	100%	80%	100%	100%	100%	100%
	Painting	90%	90%	90%	90%	90%	90%	90%
	Tilling	100%	100%	100%	100%	100%	100%	100%
	Electrical Fittings	70%	70%	70%	70%	70%	70%	70%
	Bathroom Fittings	70%	70%	75%	75%	75%	75%	75%
6 th	Door fixing	15%	100%	100%	100%	100%	70%	100%
	Painting	85%	85%	85%	85%	85%	85%	85%
	Tilling	100%	100%	100%	100%	100%	100%	100%

MONTHLY PROGRESS REPORT- JULY 2017

6 th	Electrical Fittings	70%	70%	70%	70%	70%	70%	70%
	Bathroom Fittings	0%	70%	70%	70%	70%	70%	70%
	Plumbing	100%	100%	100%	100%	100%	100%	100%
7 th	Door fixing	100%	100%	100%	100%	100%	100%	100%
	Painting	80%	95%	95%	80%	80%	80%	80%
	Tilling	100%	100%	100%	100%	100%	100%	100%
	Electrical Fittings	60%	60%	60%	60%	60%	60%	60%
	Bathroom Fittings	65%	65%	60%	60%	60%	65%	65%
8 th	Door fixing	100%	100%	10%	80%	10%	10%	100%
	Painting	95%	70%	70%	70%	70%	70%	70%
	Tilling	100%	100%	0%	100%	100%	100%	100%
	Electrical Fittings	90%	40%	40%	40%	40%	40%	40%
	Bathroom Fittings	80%	70%	0%	60%	0%	5%	60%
9 th	Door fixing	10%	10%	100%	10%	10%	10%	100%
	Painting	75%	75%	70%	95%	75%	75%	85%
	Tilling	100%	100%	100%		100%	100%	100%
	Electrical Fittings	50%	50%	50%	70%	40%	40%	50%
	Bathroom Fittings	100%	100%	100%	100%	100%	60%	60%
10 th	Door frame	100%	100%	100%	100%	100%	100%	100%
	Painting	70%	70%	70%	70%	70%	70%	70%
	Tilling	100%	100%	100%	100%	100%	100%	100%
	Electrical Wiring	100%	100%	100%	100%	100%	100%	100%
	Plumbing	100%	100%	100%	100%	100%	100%	100%
11 th	Door frame	100%	100%	100%				100%
	Painting	65%	95%	60%				65%
	Tilling	95%		70%				55%
	Electrical Wiring	100%	100%	100%				100%
	Plumbing	100%	100%	100%				100%

PROJECT PICTURES



FRONT VIEW



FRONT VIEW



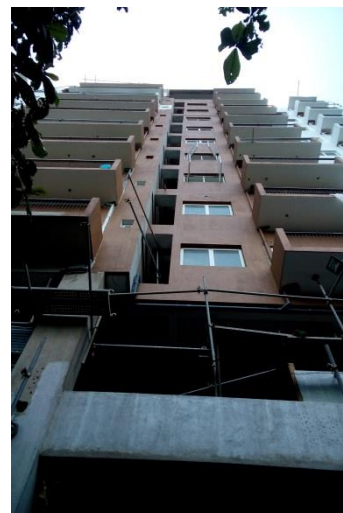
SIDE VIEW



SIDE VIEW



REAR VIEW



REAR VIEW

MONTHLY PROGRESS REPORT- JULY 2017



SERVICES LINES



SERVICES LINES



ELECTRICAL METERS



PUMPS IN GF