

**JAWATTA**  
KASSAPA RD,  
COLOMBO 05

**LOVE WHERE YOU LIVE**

Desire





**Desire**  
KASSAPA RD,

**BEST SCHOOLS**

Desire, the grandeur apartments located in the thriving city of Colombo 5 Kassapa Road, Jawatta is the quintessential location for one's busy life style within the vicinity of many leading schools.



**Desire**  
 KASSAPA RD,

**BEST SURROUNDINGS**

Desire apartments will make wonderful home with our upscale style apartments and beautifully well-kept community. The wonderful surroundings keep the same tone of luxury as our apartment homes. Come and get the best of luxury living and peaceful surroundings A Class A, upscale apartment community that you deserve!





**RELISH THE SPECTACULAR SKYLINE**



## SCHOOLS

Visakha Vidyalaya	<b>650m</b>
Isipathana College	<b>750m</b>
Thurstan College	<b>1.4 km</b>
Royal College	<b>1.4 km</b>
Stafford International School	<b>1.7 km</b>
Colombo International School	<b>1.8 km</b>
St.Bridget Convent	<b>1.9 km</b>
D.S. Senanayake College	<b>2.0 km</b>
British School	<b>1.9 km</b>
Elizabeth Moir School	<b>1.25 km</b>
Sirimavo Bandaranaike Vidyalaya	<b>600m</b>
Holy Family Convent	<b>1.1 km</b>
Mahanama College	<b>1.8 km</b>
Ladies College	<b>1.7 km</b>
St.Peter's College	<b>1.5 km</b>
Lumbini College	<b>1.1 km</b>



## ENTERTAINMENT

Arcade Independence Square	<b>1.0km</b>
BMICH	<b>1.0km</b>
Majestic City	<b>1.1km</b>
Lionel Wendt Art Gallery	<b>1.5km</b>



## SHOPPING

The Factory Outlet	<b>500m</b>
Beverly Street	<b>850m</b>
Romafour	<b>1.1 km</b>
Cool Planet	<b>550m</b>
Fashion Bug	<b>1.2 km</b>
US POLO ASSN.	<b>1.2 km</b>
Avirate	<b>1.6 km</b>
Dilly & Carlo	<b>1.7 km</b>
Tommy Hilfiger Store	<b>1.0km</b>
House Of Fashion	<b>2.0m</b>



## HOTELS AND RESTAURANTS

ISSO	<b>50m</b>
JAVA Lounge	<b>200m</b>
KFC	<b>150m</b>
Giovanni's	<b>300m</b>
Domenico's	<b>350m</b>
Sensaal	<b>300m</b>
88 Chinese Restaurant	<b>600m</b>
Rasa Bojun Restaurant	<b>650m</b>
Sri Vihar	<b>700m</b>
Elite Indian	<b>950m</b>
Tsing Tao	<b>1.3km</b>
Maharaja Palace	<b>1.5km</b>
OZO Colombo	<b>1.6km</b>



## HOSPITALS

Joseph Fraser Memorial Hospital	<b>350m</b>
Asiri Hospital	<b>850m</b>
Lanka Hospital	<b>1.1km</b>
Oasis Hospital	<b>1.4km</b>
Asiri Surgical	<b>1.5km</b>
Ninewells Hospital	<b>1.8km</b>
Park Hospital	<b>1.0km</b>
Durdans Hospital	<b>1.5km</b>



## SUPERMARKET

Keells Super	<b>800m</b>
Cargills	<b>1.0 km</b>



## SPORTS

Ceylonese Rugby & Football Club	<b>850m</b>
SSC Cricket Grounds	<b>1.3km</b>
Colombo Race Course Ground	<b>1.1km</b>
Colombo Cricket Club	<b>1.4km</b>

# WHOLE LIFE IS HERE



Welcome to Desire, Kassapa Road. The brand new luxury apartments offer style, sustainability and an unsurpassed way of living in the heart of Jawatta. Love where you live; with convenience, space and a wealth of on-site amenities right at your fingertips.



**Desire**  
KASSAPA RD,

**SOPHISTICATED SURROUNDINGS**





## **THE PLEASURE OF UNIQUENESS**

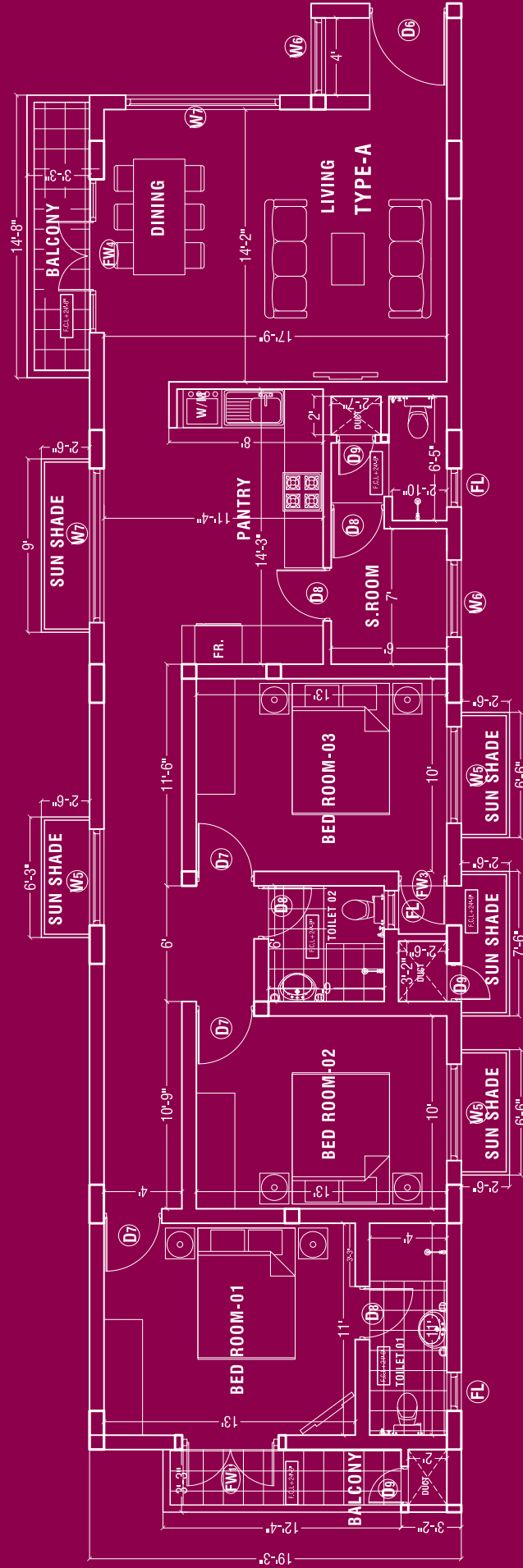
All Pictures shown are for illustration purpose only. Actual product may vary due to product enhancement.

---

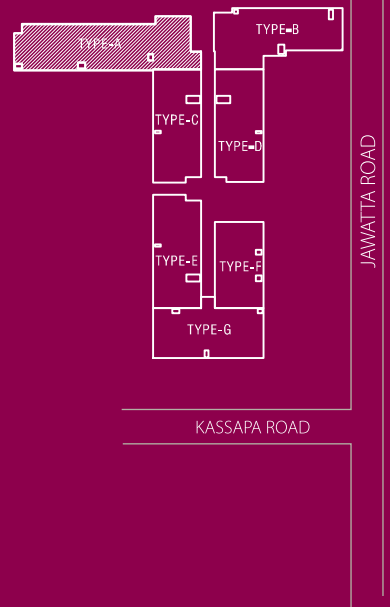
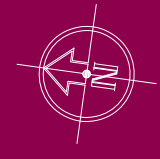
**MELT YOUR  
STRESS AWAY**

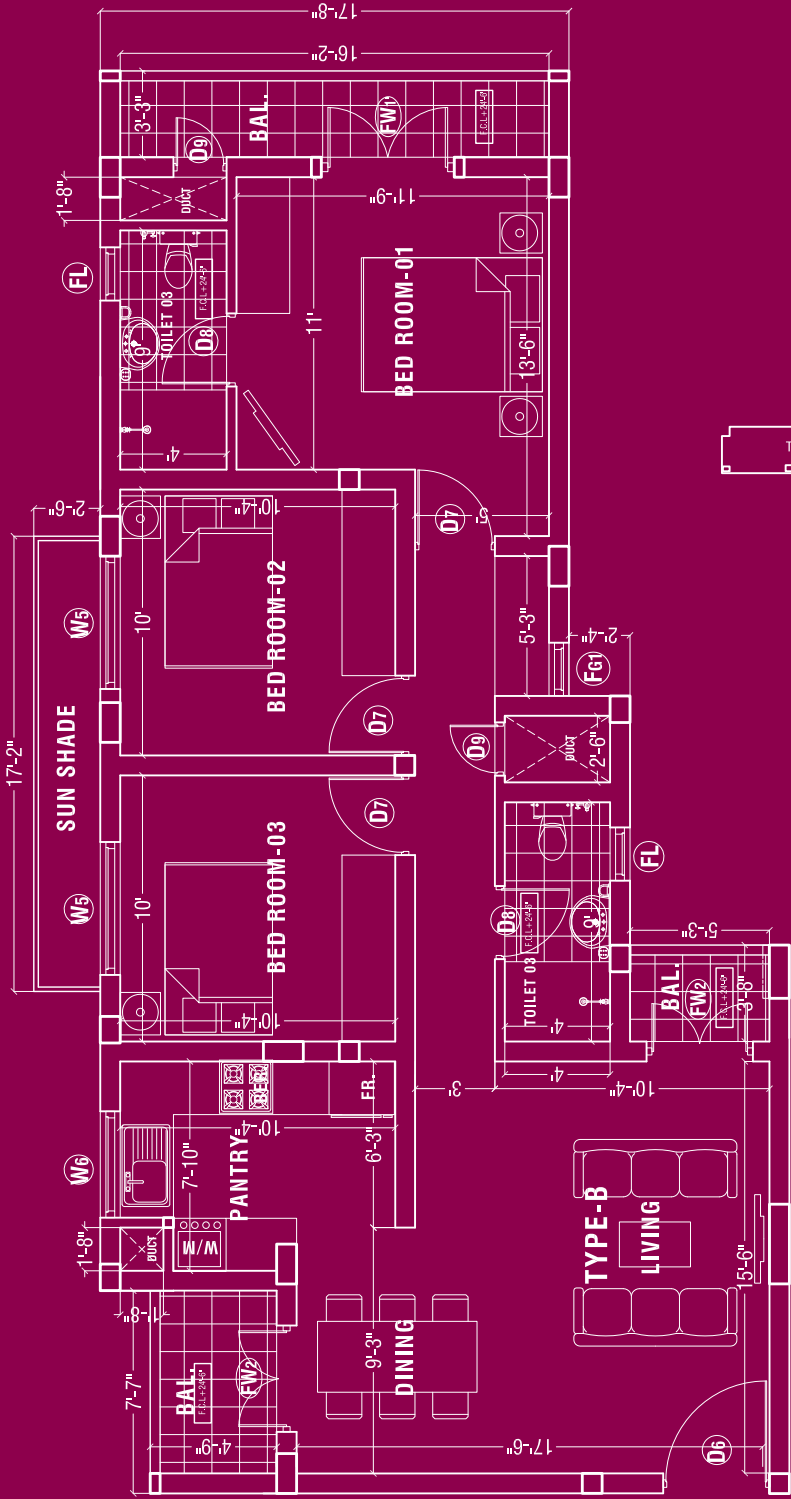
---



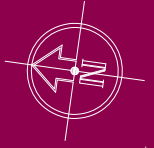


**TYPE A**  
**FLOOR AREA**  
**(WITH BALCONIES)**  
**1,460 SQ. FT.**

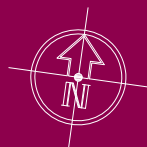
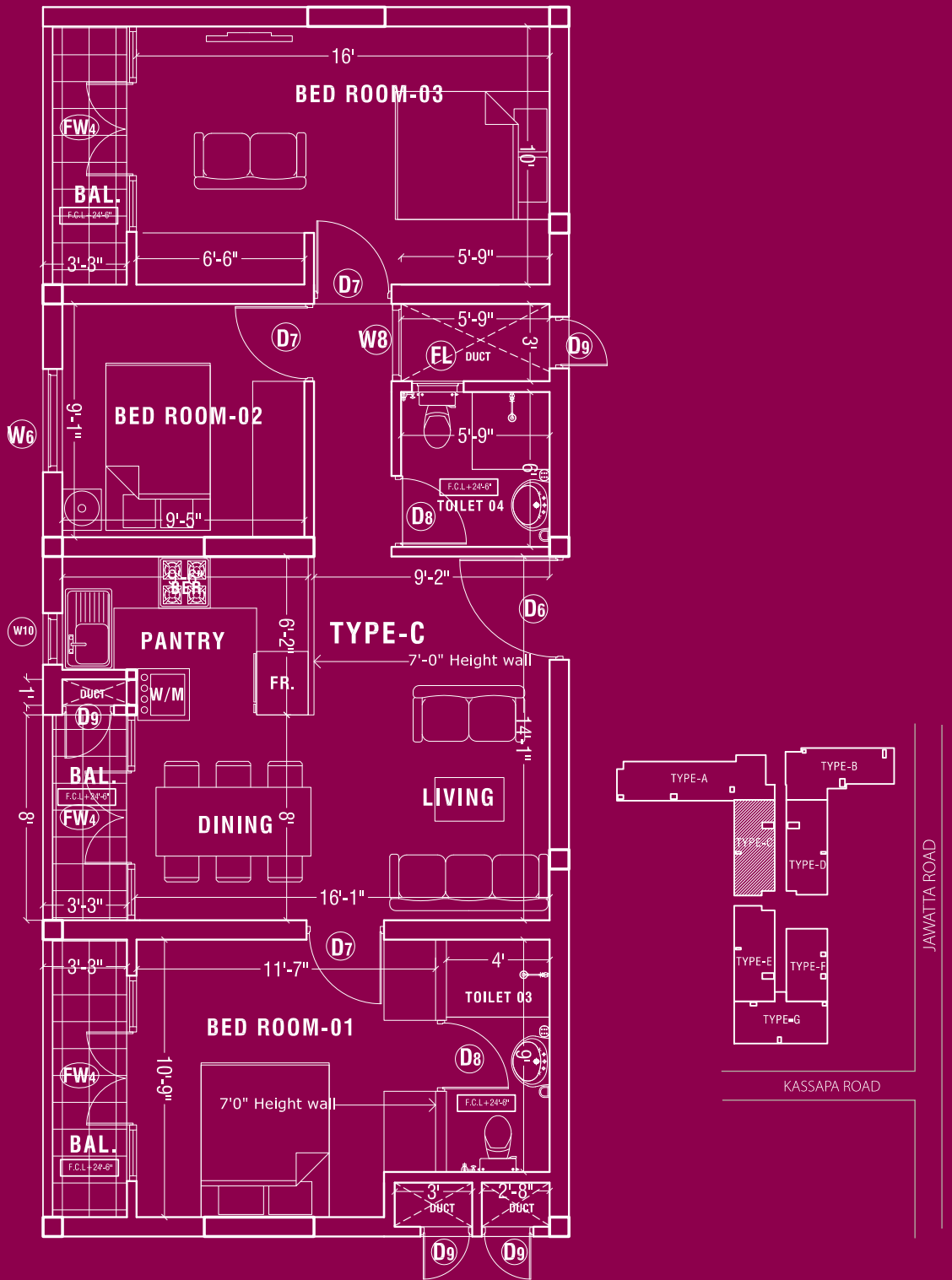




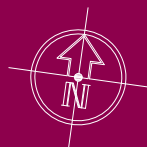
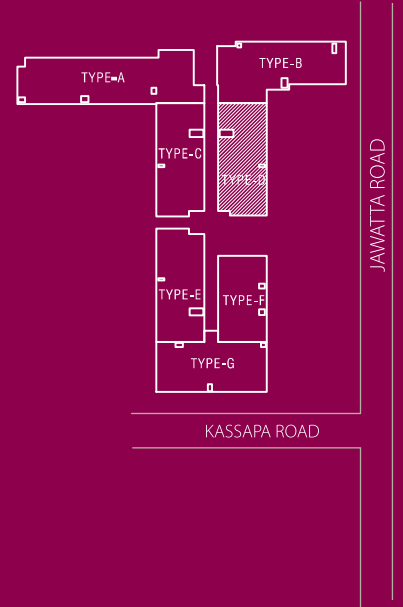
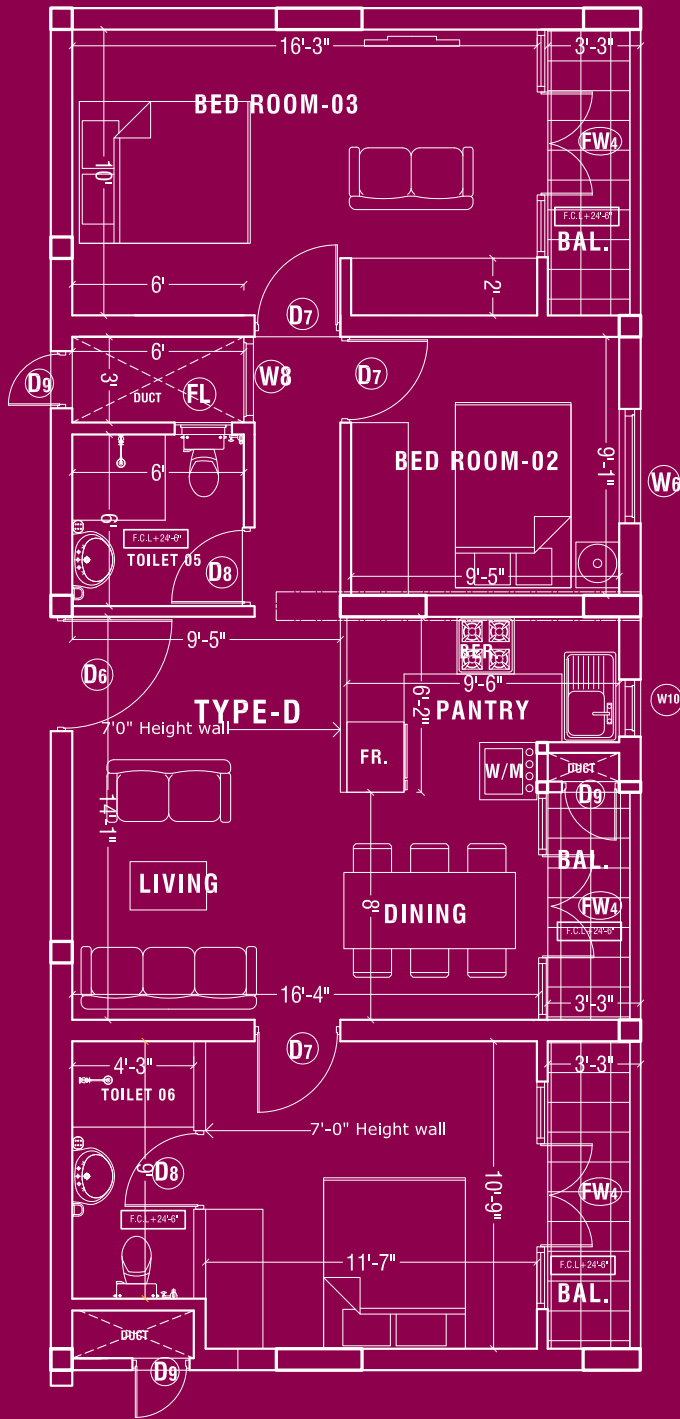
**TYPE B**  
**FLOOR AREA**  
**(WITH BALCONIES)**  
**1,092 SQ. FT.**



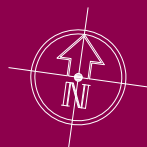
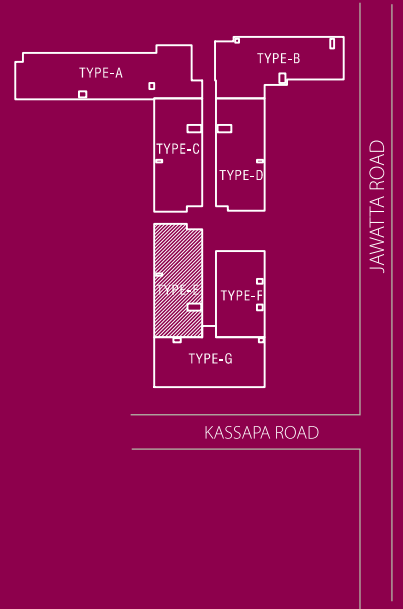
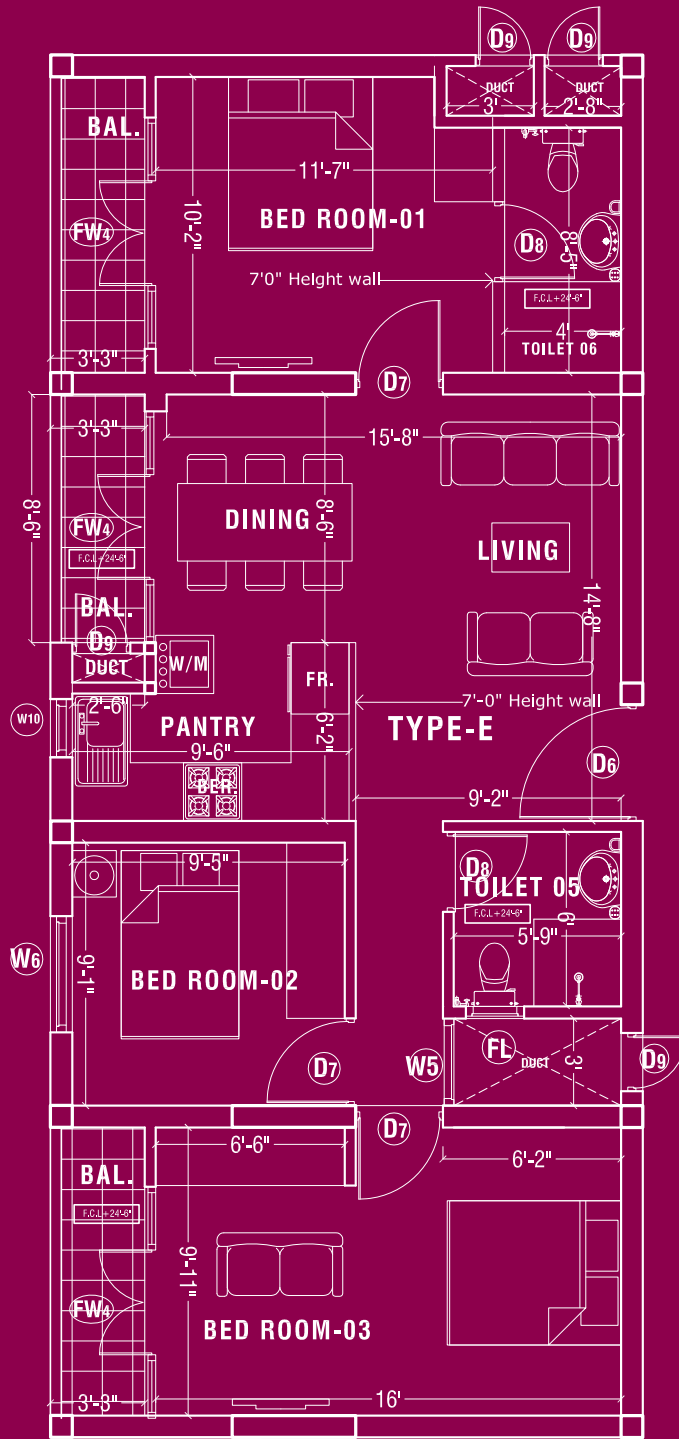
**TYPE B**  
**FLOOR AREA**  
**(WITHOUT BALCONIES)**  
**1,000 SQ. FT.**



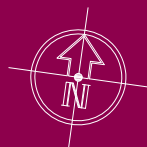
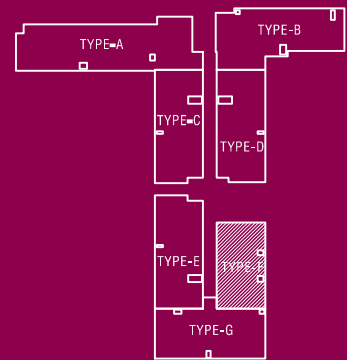
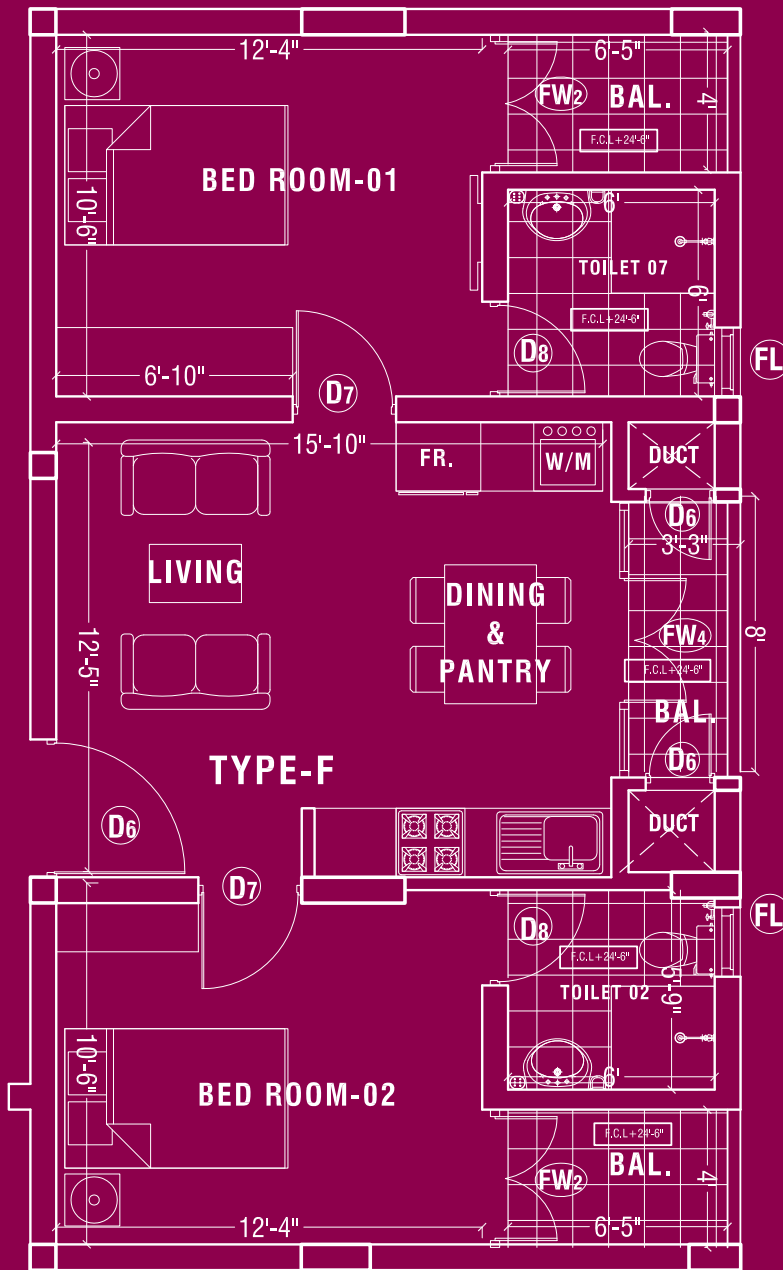
**TYPE C**  
**FLOOR AREA**  
**(WITH BALCONIES)**  
**911 SQ. FT.**



**TYPE D**  
**FLOOR AREA**  
**(WITH BALCONIES)**  
**922 SQ. FT.**

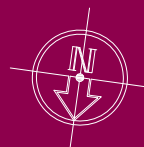
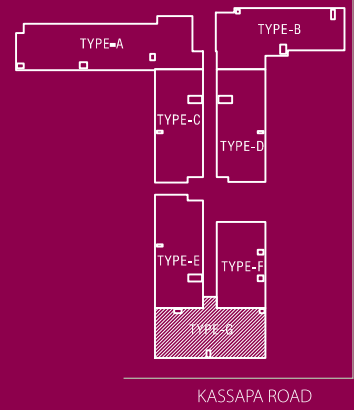
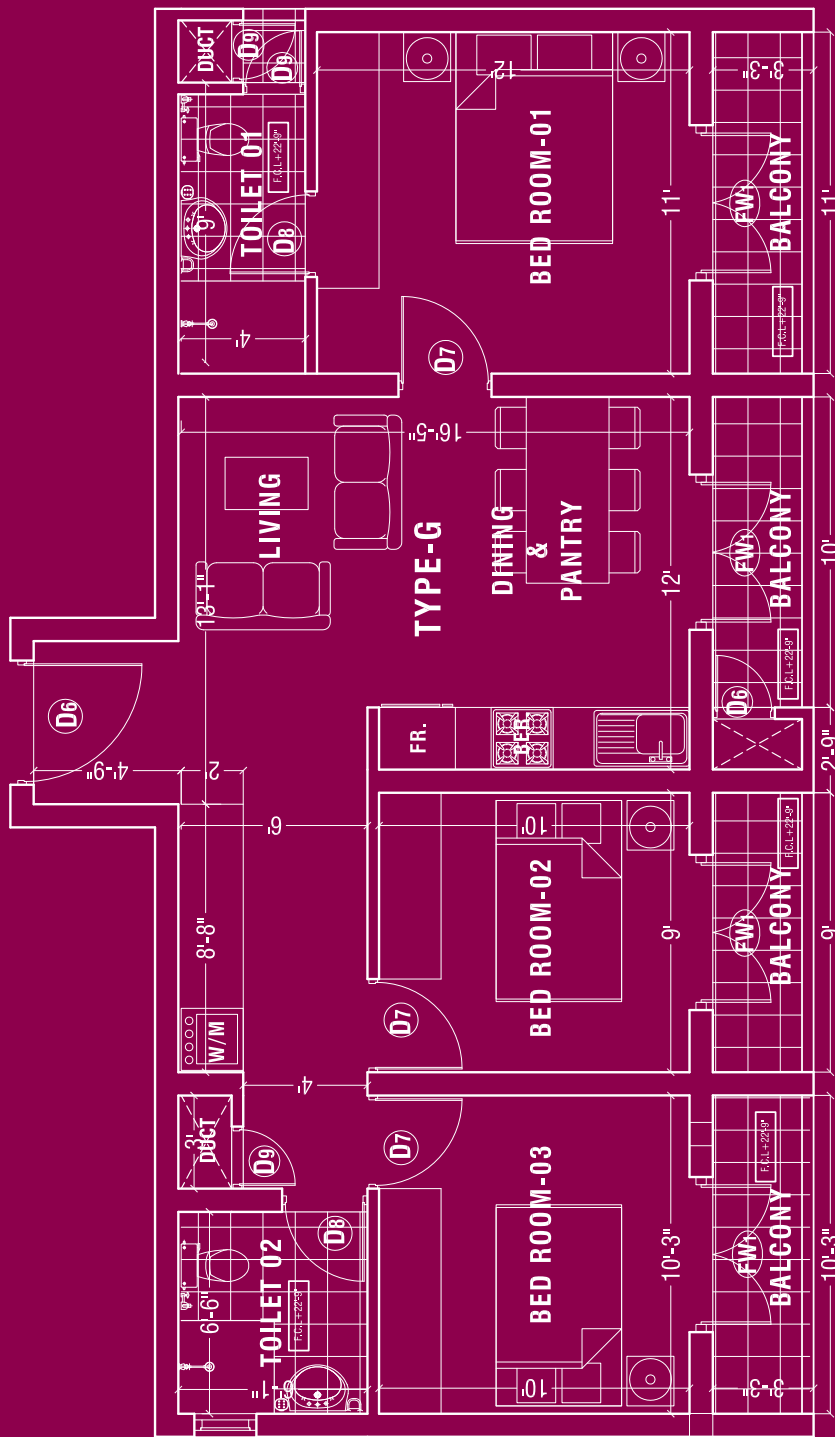


**TYPE E**  
**FLOOR AREA**  
**(WITH BALCONIES)**  
**910 SQ. FT.**

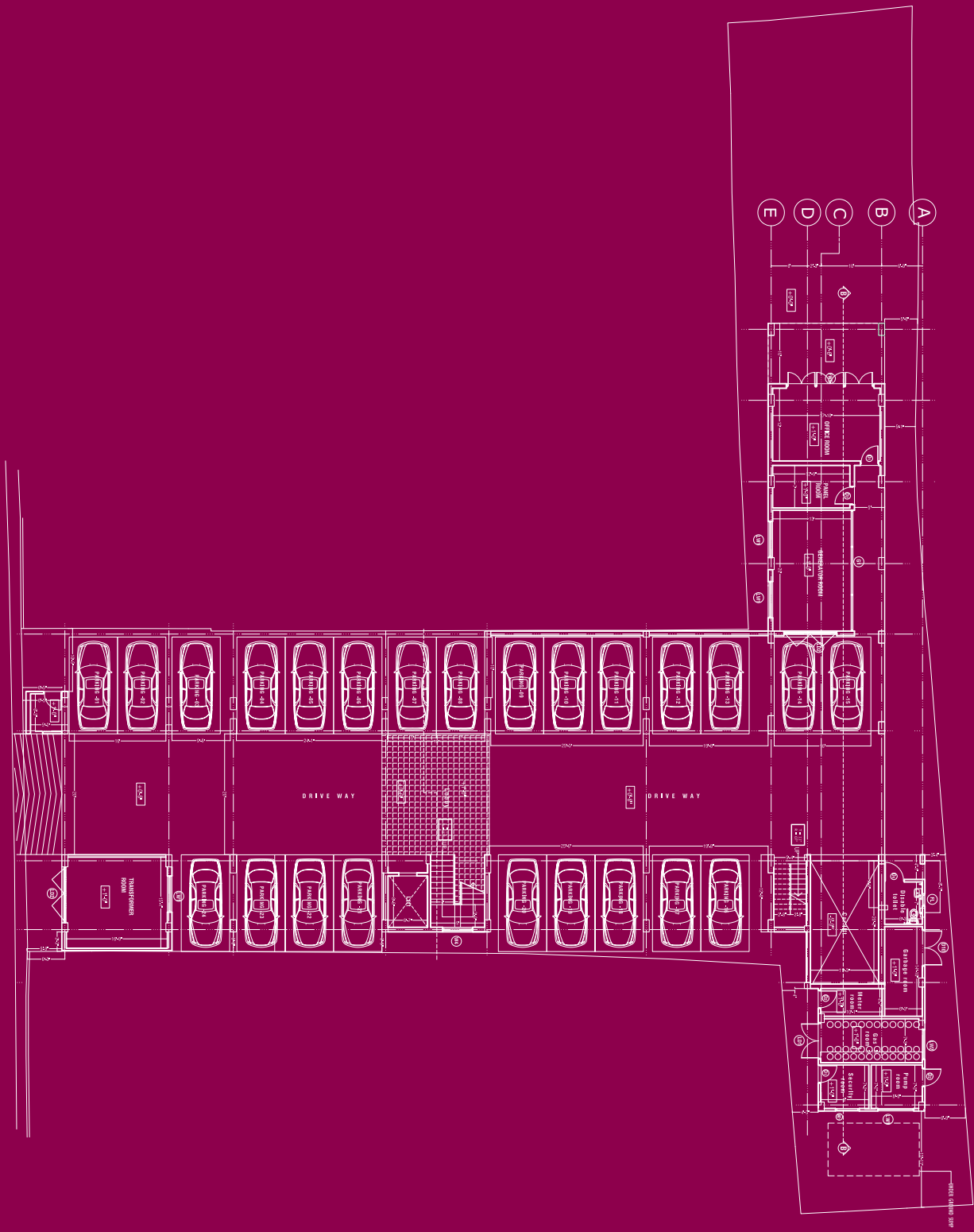


**TYPE F**  
**FLOOR AREA**  
**(WITH BALCONIES)**  
**716 SQ. FT.**

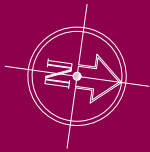
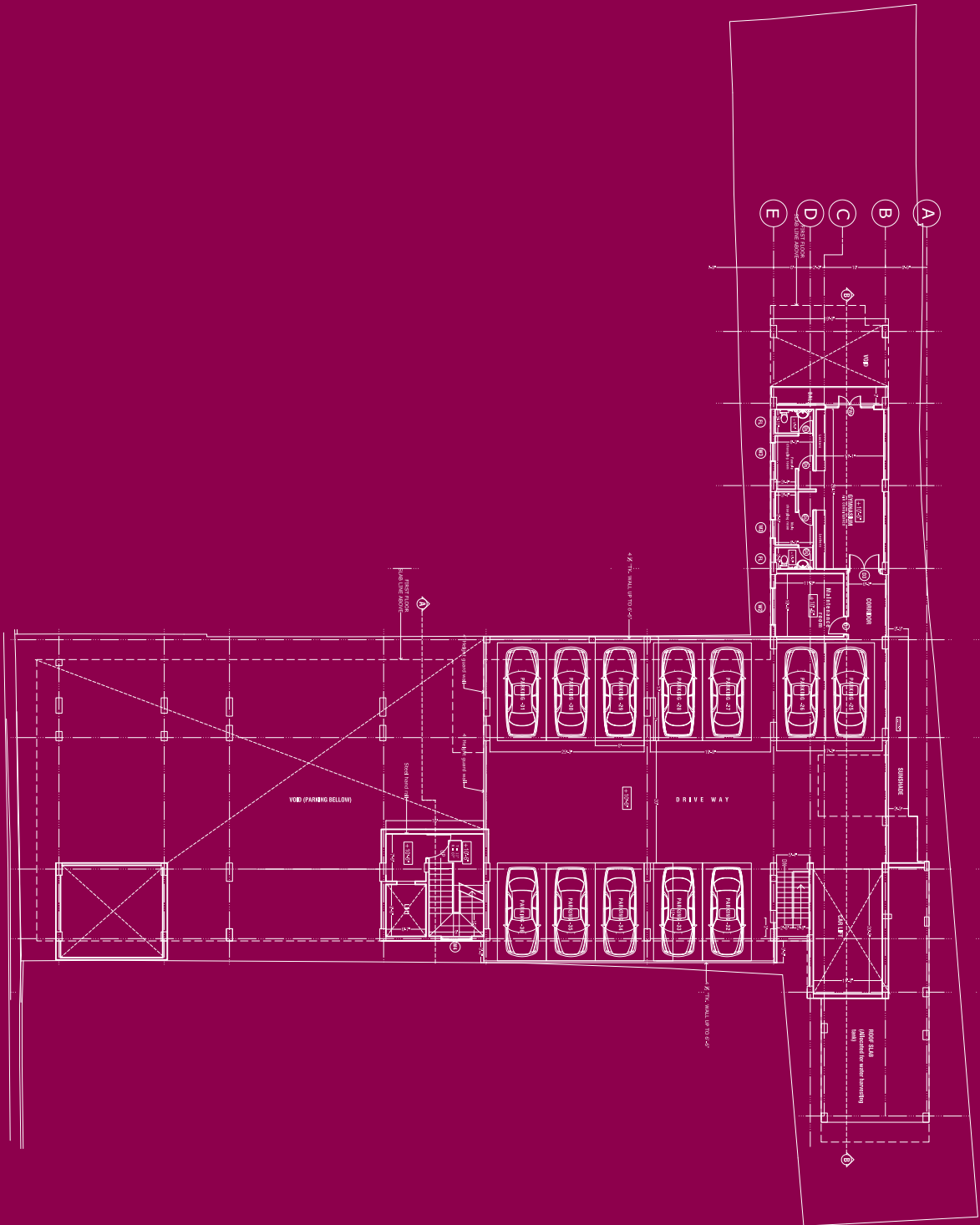




**TYPE G**  
**FLOOR AREA**  
**(WITH BALCONIES)**  
**974 SQ. FT.**



**GROUND FLOOR PLAN ( 24 PARKING LOTS)**  
**FLOOR AREA : 8,460 SQ. FT.**



**MEZZANINE FLOOR PLAN ( 12 PARKING LOTS)**  
**FLOOR AREA : 3,822 SQ. FT.**

# SPECIFICATIONS

## **Floor Area**

.... Sqft including balconies  
Living, Dinning, Pantry, 03 Bedrooms  
(Type F- 2 Bedrooms), 02 toilets,  
Servant room & Toilet  
(Type A only) and Balconies

01 Reserved Parking slot within the complex

(Parking for unit type C,D,E and F at 1st and 2nd floors, type E and F at 3rd floor type F at 4th and 5th floors are at mazzanine floor.  
Parking for all other units are at ground floor)

## **Sub Structure**

Raft/pile foundation with RCC framed structure as per Structural Engineer's recommendation

## **Super Structure**

RCC Columns, Beams, Slabs and Masonry walls to satisfy the design requirements

## **FLOOR FINISHES**

### **Living, Dining & Bedrooms**

High Quality Porcelain tiles as per Architect's selection

### **Verandah & Balconies**

Non slippery high quality porcelain/ceramic tiles

### **Toilets**

**Floor :** Non slippery porcelain/ceramic tiles

**Walls:** Porcelain/ceramic tiles up to a height of 7 feet

## **WALL FINISHES**

### **Internal walls**

Smooth plaster with wall putty, filler and two coats of emulsion paint (CIC or equivalent)

### **External walls**

Semi- rough plaster and apply wall primer, 3 coats of weather-shield paint system (CIC or equivalent)

### **Pantry**

Fully fitted modern design pantry cabinets with hob & oven, hood with carbon filter  
Granite/Quartz work top.  
SS sink with drainer and swan neck tap  
(American Standard or equivalent)

### **Bathrooms**

Rocell /American standard or equivalent fittings for all bathrooms  
Watercloset with hand bidet

Wash basin with mixer tap (Hansgrohe or equivalent)

Mirror and mirror light  
Hot water via geyser for shower and wash basin.  
Tempered glass shower partition

Soap tray, Toothbrush holder, Toilet paper holder, Robe hook and Towel rail (American Standard or equivalent)

### **DOORS AND WINDOWS**

#### **Main Door**

Engineered solid timber sash and timber frame.

#### **Internal doors**

Engineered solid timber sash and timber frame.

#### **Windows**

Powder coated aluminium glazed windows

#### **Fan lights**

Powder coated aluminium glazed Fan lights

#### **Locks**

Mortice door lock with a handle for Main Door (Union or equivalent) Knob type locks for all other doors

#### **Colour scheme**

As directed by the Architect

### **Electrical work**

400V/30 AMP Three phase power supply

Ceiling Fans for Living and all Bedrooms (KDK or equivalent)

13 Amp Socket outlets and Switches (ORANGE or equivalent)

MCB, RCCB (ABB/SIEMENS or equivalent)

Shaver socket outlet in toilets (excluding servant toilet)

Telephone and TV socket outlet in Living area and Master bedroom

LED Light fittings as directed by the Architect

AC units for all bedrooms and provision for living area

### **Water Supply**

Connection from National Water Supply & Drainage Board,  
Underground sump and Overhead storage tanks

### **General**

Backup power supply Generator

Central LP gas system with Gas bank and leak detection system

Individual meters for Electricity, LP gas and Water supply

Garbage collection point

Fire protection and alarm system

CCTV for main entrance, lift lobbies, parking level and roof top.

Swimming pool at roof top

Gymnasium

Common lift

disclaimer

All Pictures shown are for illustration purpose only. Actual product may vary due to product enhancement.

**LOVE WHERE YOU LIVE**



**94 710 777 666**  
**94 710 666 222**



**PRIME GROUP**

COMMITTED TO CREATING A BETTER PLACE ON EARTH.

**HEAD OFFICE**

No 75, D.S.Senanayake Mawatha,  
 Colombo 08, Sri Lanka.

t | +94 112 699822 f | +94 114 209691

e | [info@primeresidencies.lk](mailto:info@primeresidencies.lk) w| [primeresidencies.lk](http://primeresidencies.lk)

Sri Lanka's  
**Only Credit Rated**  
**Real Estate Group**  
**A- Stable**  
 by ICRA LANKA

**MOST RESPECTED**  
 ENTITY IN SRI LANKA  
 (REAL ESTATE)  
 1507/1515/2017  
  
 A SIC ISO 9001:2015 certified company



**Best Developer**  
 in Sri Lanka  
**Best Housing**  
 Development  
 in Sri Lanka  
**Best Luxury Condo**  
 Development  
**Special**  
 Recognition  
 in CSR

