

THE COLOMBO BORDER

සෞඛ්‍ය සේවා

କୋହଲ ସହର

– Your Story Begins Here –



– Your Story
Begins Here –



4 Minutes
to Katunayake Expressway

15 Minutes
to BIA

20 Minutes
to Port City

15 Minutes
to Lotus Tower



Welcome to the zenith of
sophistication, as Prime Group
elegantly reveals its newest marvel,
The Colombo Border. Embark on a
voyage of unmatched grace, with
landmarks of unmistakable
prominence gracing your path.



කොළඹ මාලිගා



A Sanctuary in the Bustling Metropolis

Here, amidst the vibrant energy of Colombo, you'll find serenity and tranquility in abundance. Relax and recharge in the comfort of your own residence, knowing that the pulse of the city is always within reach.



Access to anywhere & everywhere

Facing Colombo
Kandy Main Road

City-Centric Convenience |

Positioned at the nexus of convenience and sophistication, our prime location ensures that you are always just moments away from the city's finest attractions, dining destinations, and cultural experiences.

Effortless Commuting |

Say goodbye to long commutes and hello to seamless travel connections. The Colombo Border offers easy access to major transportation hubs, ensuring that you can navigate the city with ease and efficiency. Whether you're commuting for work or exploring the city's diverse neighbourhoods, getting there is always a breeze.



it's about
weaving
dreams

6

Developing isn't just about erecting structures; it's about weaving dreams into the fabric of reality, creating spaces where lives unfold, memories are made, and futures are shaped. It's not merely about bricks and mortar; it's about crafting havens where every corner tells a story, every window frames a vision, and every doorstep welcomes possibilities. As developers, we don't just build buildings; we build the foundations of dreams, the pillars of aspirations, and the roofs of infinite potential. For us, each project is not just a construction site; it's a canvas where the art of living finds its masterpiece, where communities thrive, and where the essence of life itself is nurtured.

A DEVELOPMENT BY



,



BELONGING | CONNECTIVITY | COMMUNITY

Step into a world where innovative design blends seamlessly with the spirit of camaraderie, where every corner is infused with the essence of thoughtful architecture and vibrant community living.



புதுலெண்

வணக்கம்

Welcome
Home

Step into a world of elegance
and sophistication as you cross
the threshold of our meticulously
crafted entrance lobby





The Residences

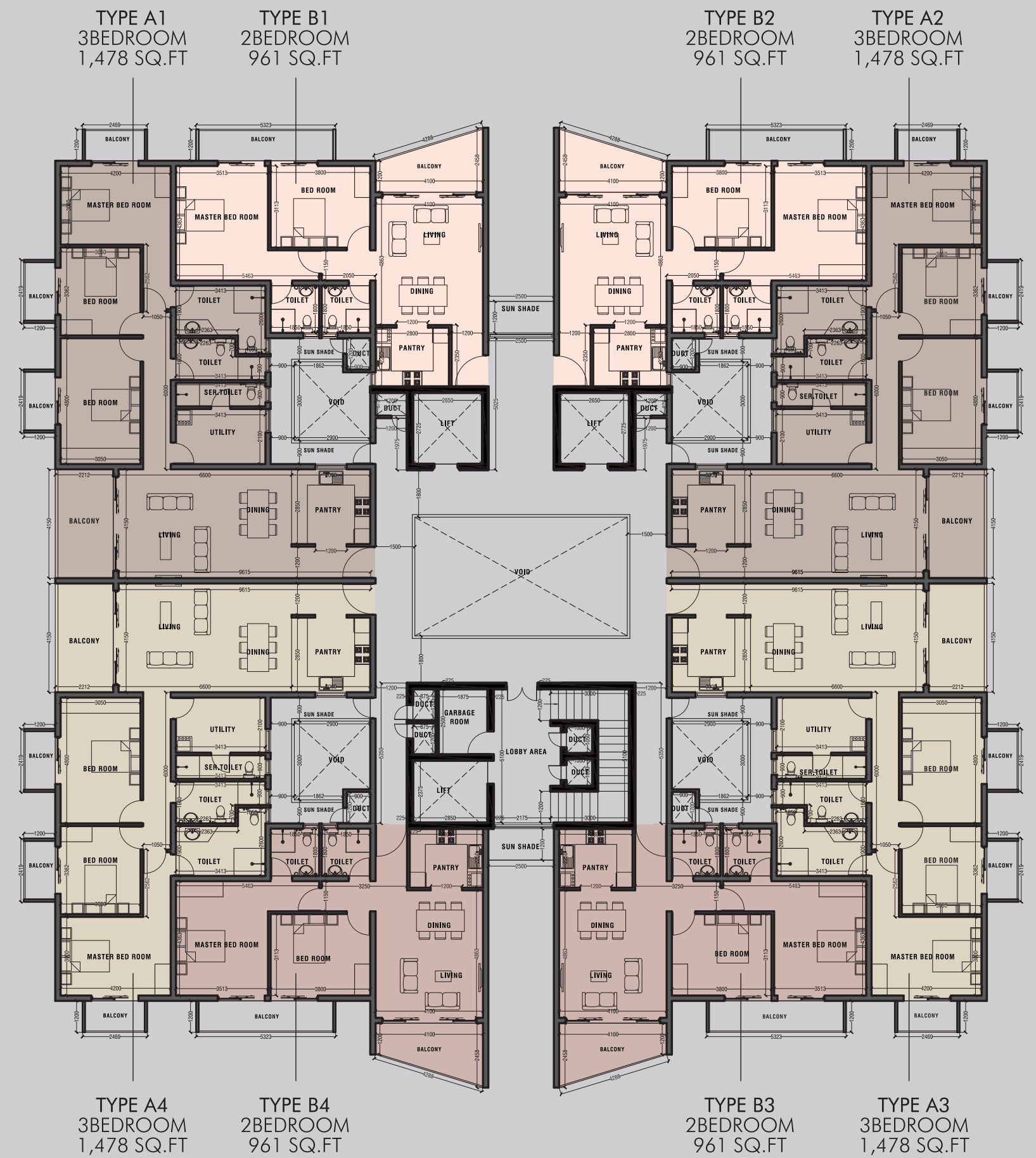
TWO BEDROOM APARTMENTS	789+ Sq.Ft
THREE BEDROOM APARTMENTS	1478+ Sq.Ft
THE PENTHOUSE SUITES	2146-2988 Sq.Ft

Discover Your Perfect Space with Our
Thoughtfully Designed Apartments

Each layout has been meticulously
designed to maximize space, comfort,
and functionality.



MASTER PLAN TOWER BRIELLE





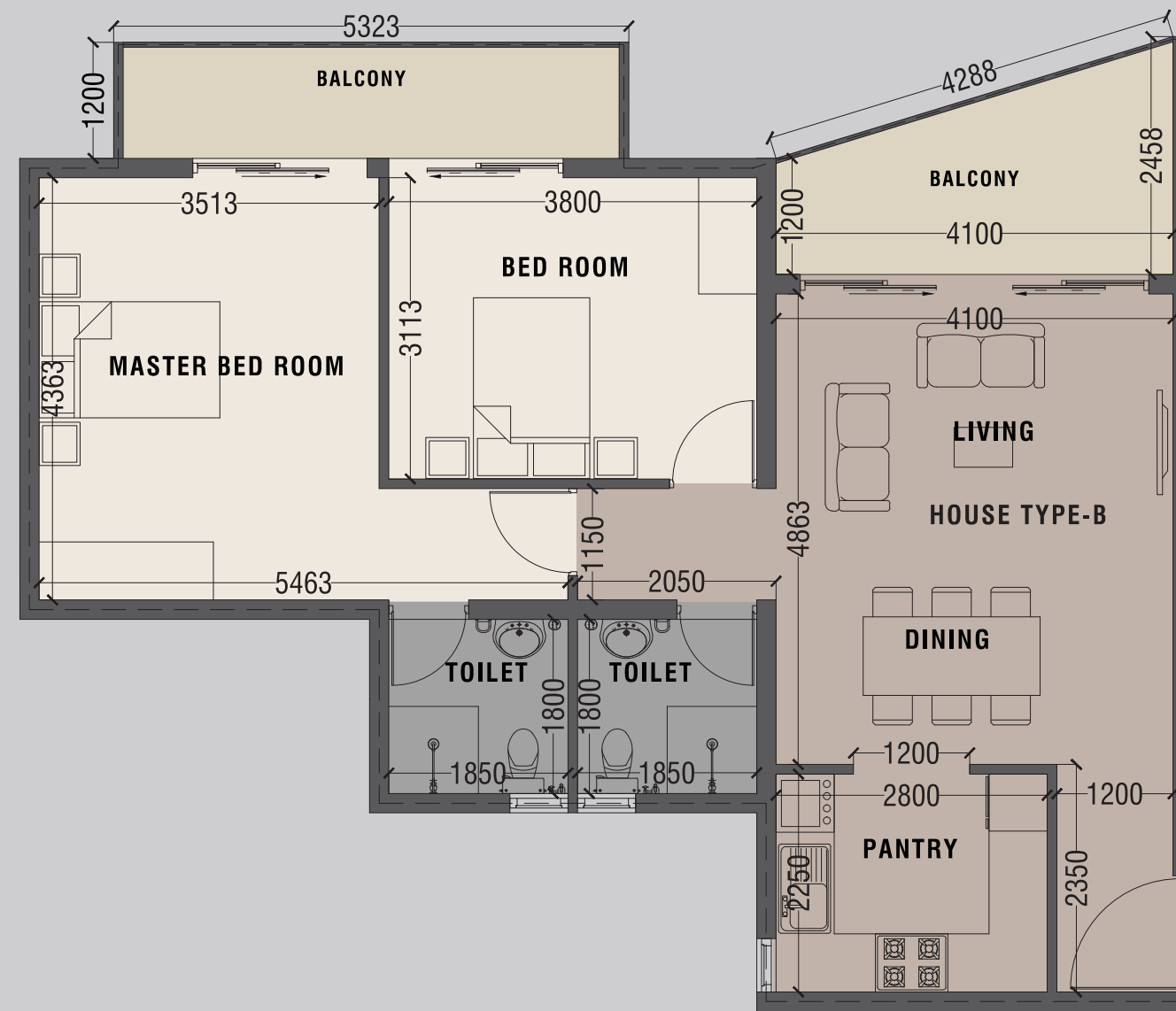
	03		01
	03		04



TYPE A 1478 SQ.FT.

MAID'S QUARTERS

DISCLAIMER:
THIS LAYOUT IS FOR VISUAL REPRESENTATION ONLY



	02		01
	02		03

TYPE B 961 SQ.FT.

DISCLAIMER:
THIS LAYOUT IS FOR VISUAL REPRESENTATION ONLY







—Home For
Everyone—



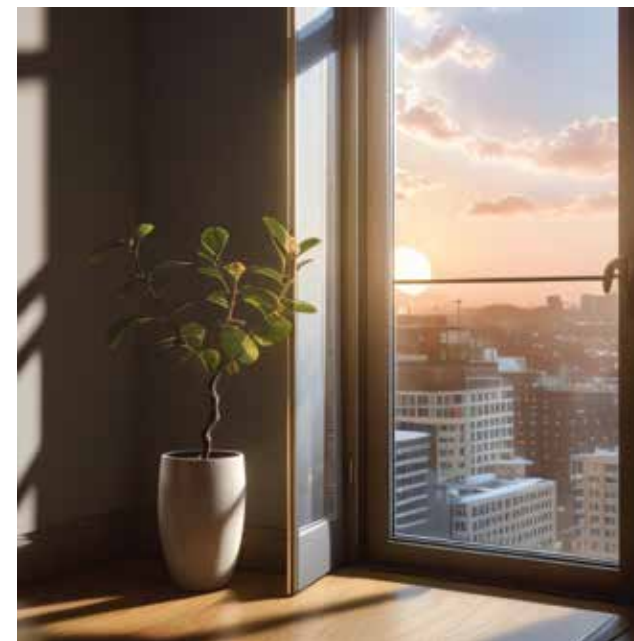
Your Sanctuary Awaits

Step through the doorway and into a world of comfort, elegance, and modern convenience. Where no detail has been spared in crafting residences that are as beautiful as they are functional. From the moment you walk in, you'll feel right at home in our thoughtfully designed living spaces.



Modern Kitchens

Channel your inner chef where functional design, spacious countertops, and ample storage makes meal prep a breeze. Whether you're cooking for one or hosting a dinner party, you'll love the functionality and style of our modern kitchen spaces.



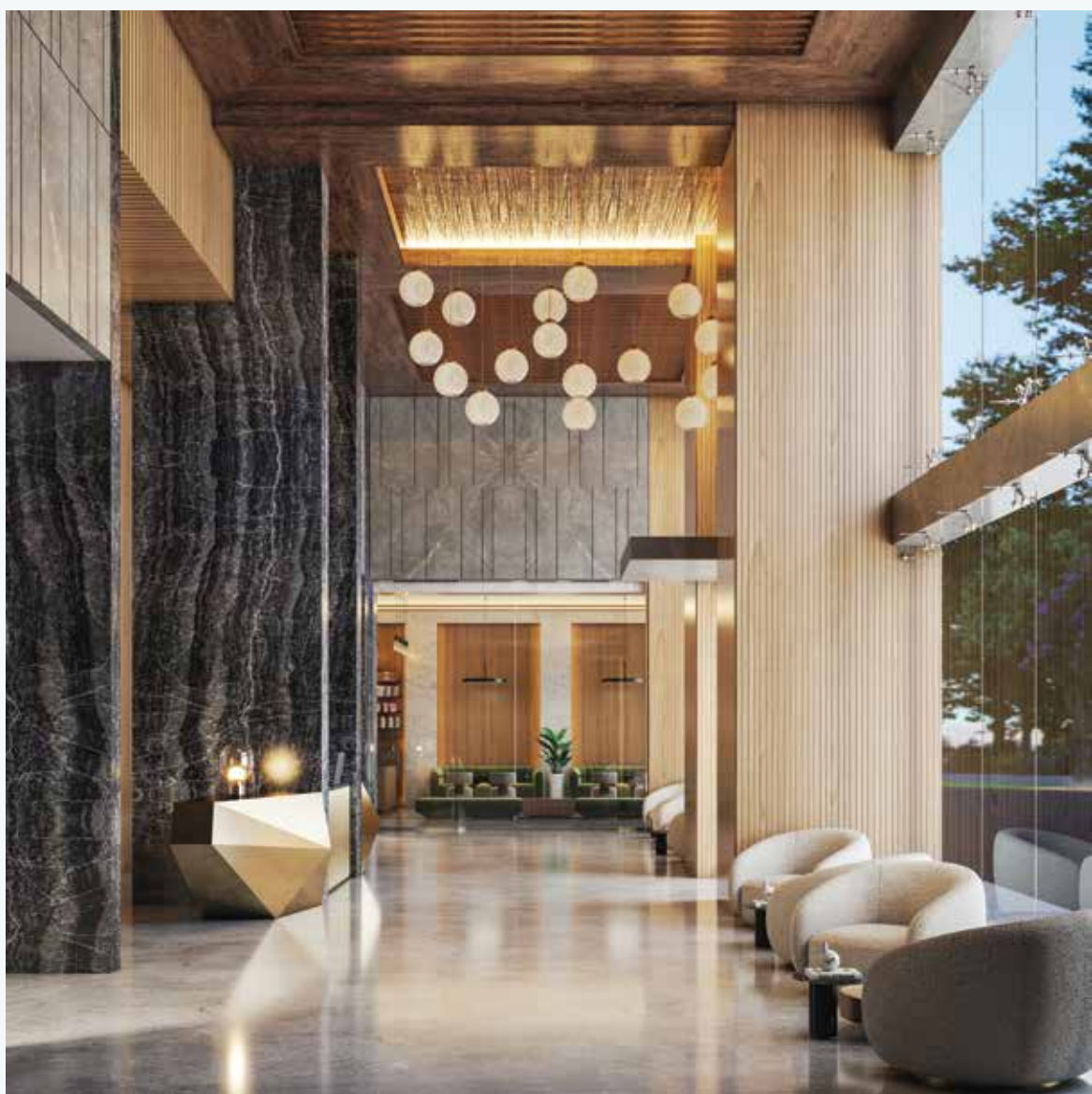
Expansive Windows

Let natural light flood your living space through expansive windows that offer sweeping views of the surrounding cityscape. From sunrise to sunset, you'll love the warm glow of natural light that fills your home, cre

Private Balconies

Step outside and enjoy the fresh air, where stunning views and ample space provide the perfect backdrop for al fresco dining, morning coffee, or simply soaking up the sunshine.









THE PENTHOUSE

– suites –

TOWER BRIELLE

LIMITED COLLECTION OF 8 PENTHOUSE SUITES

Perched high with the city skyline, these limited residences offer unparalleled views, premium amenities, and sophisticated design for the discerning resident.

BREATHTAKING VIEWS

Indulge in sweeping vistas of the cityscape from your private perch in the sky. With floor-to-ceiling windows that frame iconic landmarks and glittering city lights, every moment spent in our penthouses is a visual masterpiece.

SPACIOUS INTERIORS

Step inside and be greeted by expansive living spaces that exude grandeur and sophistication. From soaring ceilings to open-concept layouts, our penthouses offer an unparalleled sense of space and freedom, perfect for entertaining guests or simply relaxing in style.

LUXURIOUS FINISHES

Immerse yourself in luxury with high-end finishes and designer touches throughout

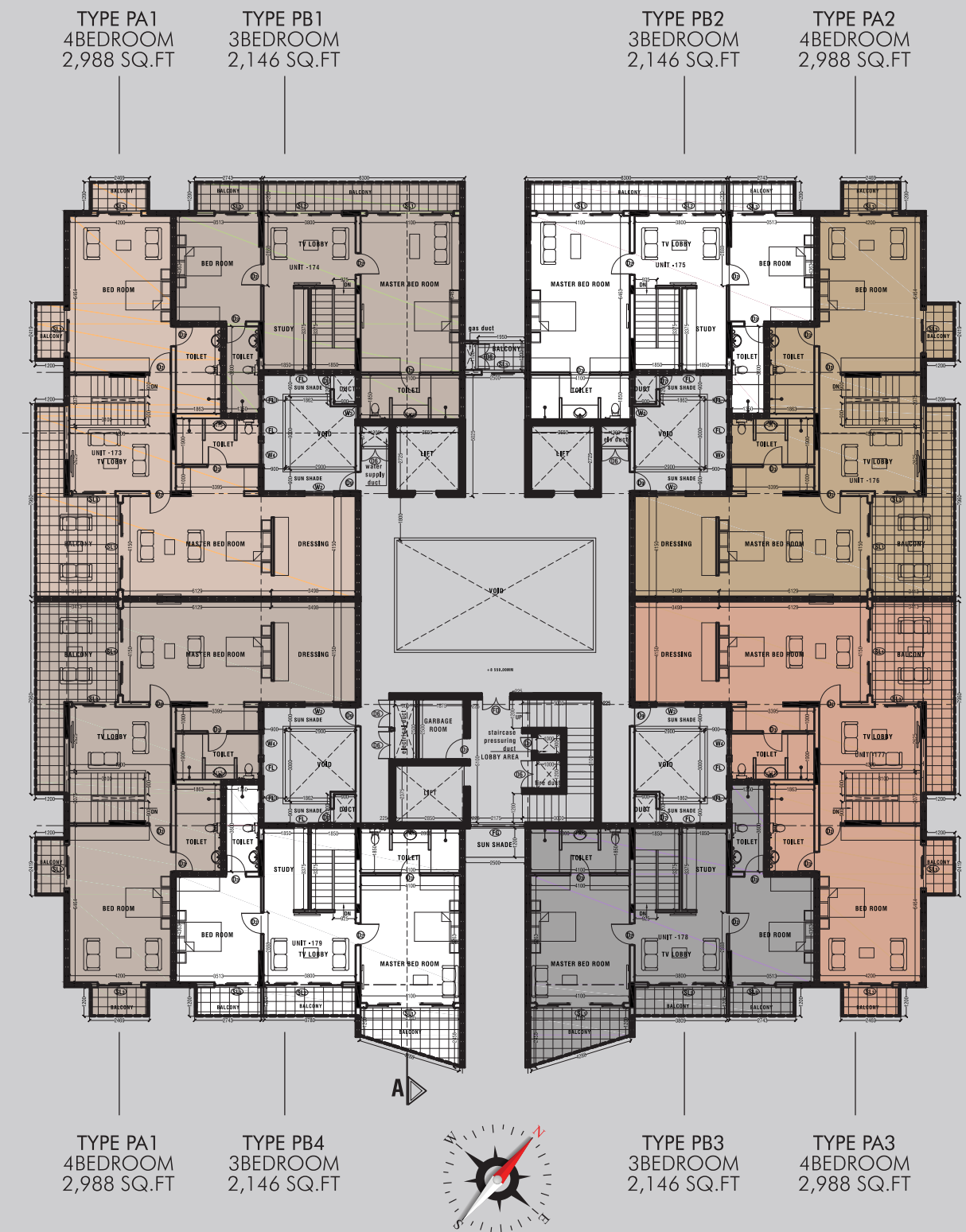
PRIVATE OUTDOOR SPACES

Your Sanctuary in the Sky
Escape the ordinary. Limited Residencies available.

PENTHOUSE – LOWER FLOOR



PENTHOUSE – UPPER FLOOR





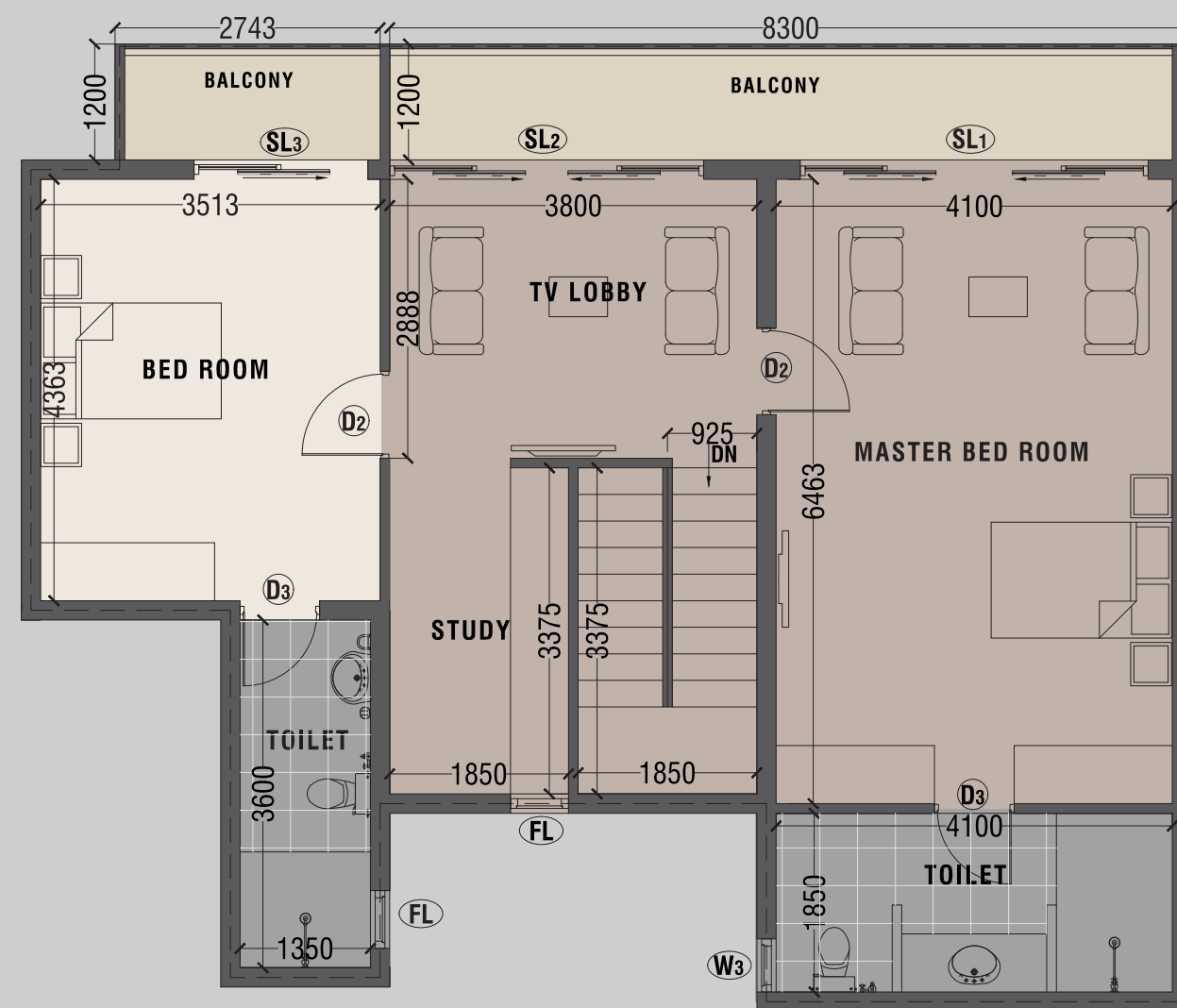
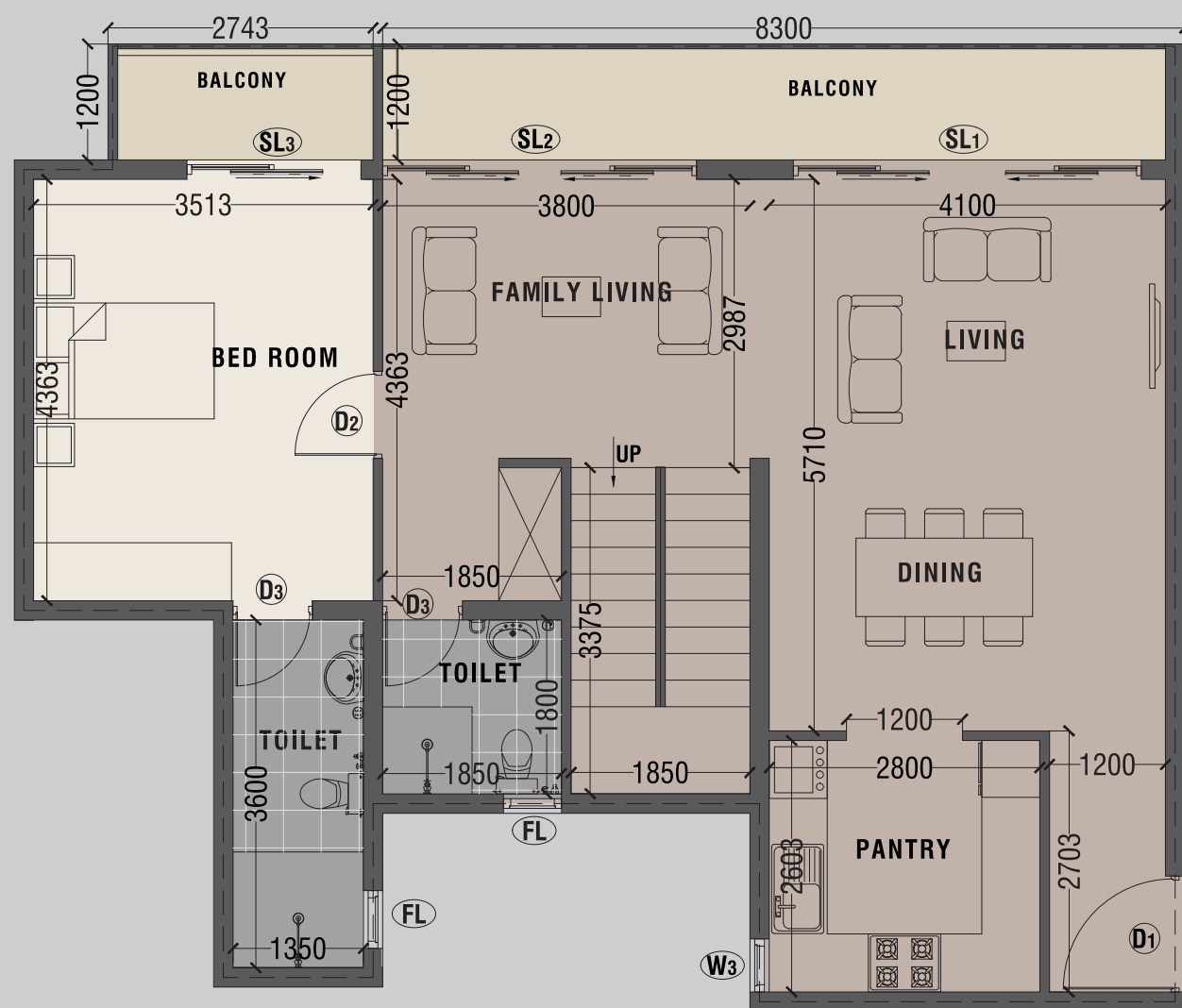
	04		01
	05		06

PENTHOUSE
LOWER FLOOR
TYPE - PA - 2988 SQ.FT.
MAID'S QUARTERS
DISCLAIMER:
THIS LAYOUT IS FOR VISUAL REPRESENTATION ONLY



	04		01
	05		06

PENTHOUSE
UPPER FLOOR
TYPE - PA - 2988 SQ.FT.
MAID'S QUARTERS
DISCLAIMER:
THIS LAYOUT IS FOR VISUAL REPRESENTATION ONLY



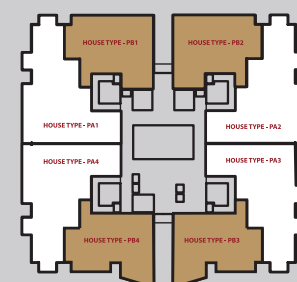
The diagram illustrates four furniture sets arranged in a 2x2 grid:

- Top Left:** A sofa set, labeled '03'.
- Top Right:** A dining set, labeled '01'.
- Bottom Left:** A bathtub set, labeled '04'.
- Bottom Right:** A balcony railing set, labeled '04'.

PENTHOUSE LOWER FLOOR

TYPE PB
2146 SQ.FT.

DISCLAIMER:
THIS LAYOUT IS FOR VISUAL REPRESENTATION ONLY



The diagram illustrates the layout of a house with four rooms, each represented by a stylized icon and a number in a circle:

- Living Room (03):** Located at the top left, featuring a sofa and a coffee table.
- Dining Room (01):** Located at the top right, featuring a dining table with chairs and a set of glassware.
- Kitchen (04):** Located at the bottom left, featuring a bathtub.
- Bathroom (04):** Located at the bottom right, featuring a bathtub.

The rooms are connected by a central hallway, and the layout is symmetrical.

PENTHOUSE

UPPER FLOOR

TYPE PB
2146 SQ.FT.

DISCLAIMER:
THIS LAYOUT IS FOR VISUAL REPRESENTATION ONLY

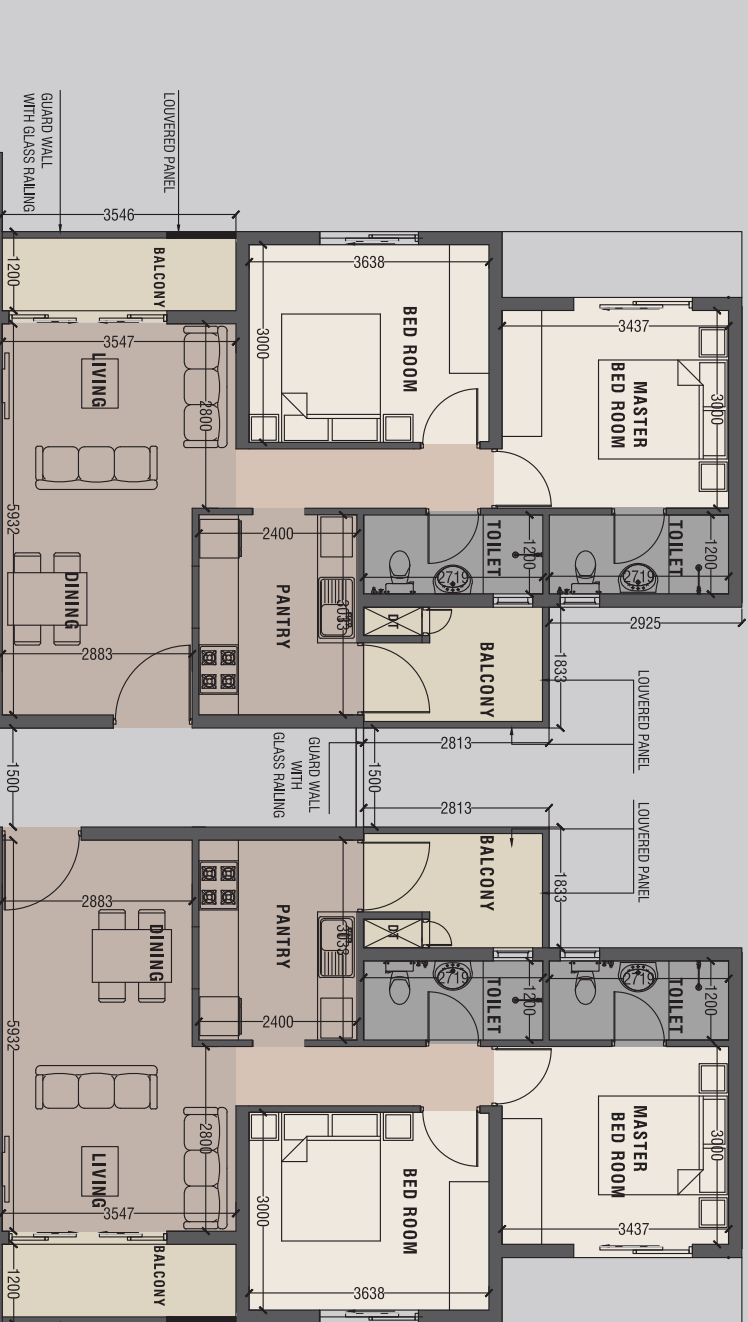




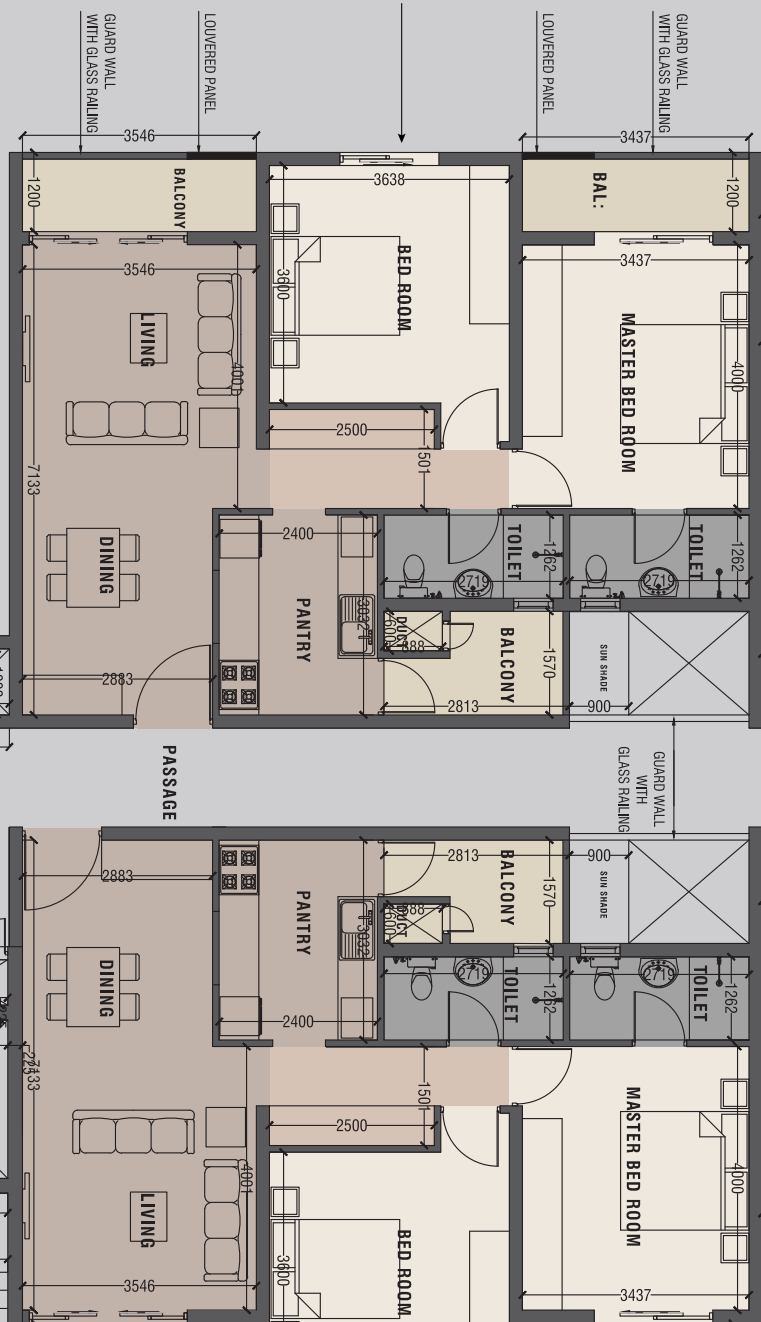


MASTER PLAN
TOWER
AMARI & COSMOS

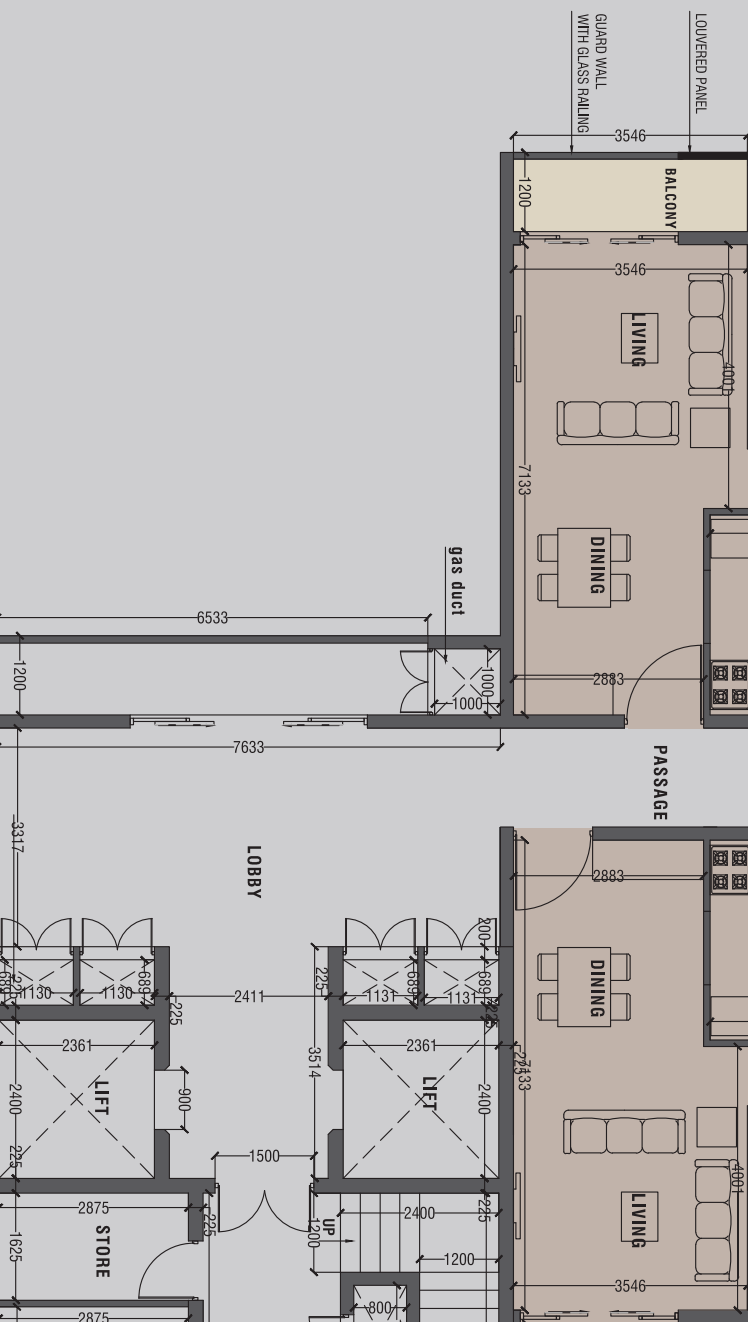
TYPE A
2 BEDROOMS
789 SQ.FT



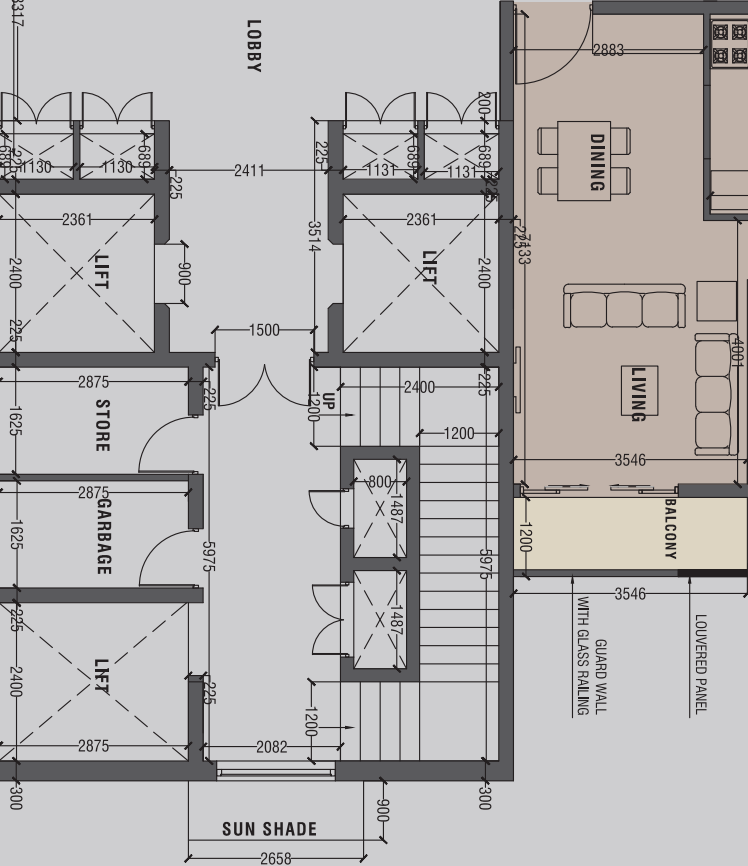
TYPE B
2 BEDROOMS
789 SQ.FT



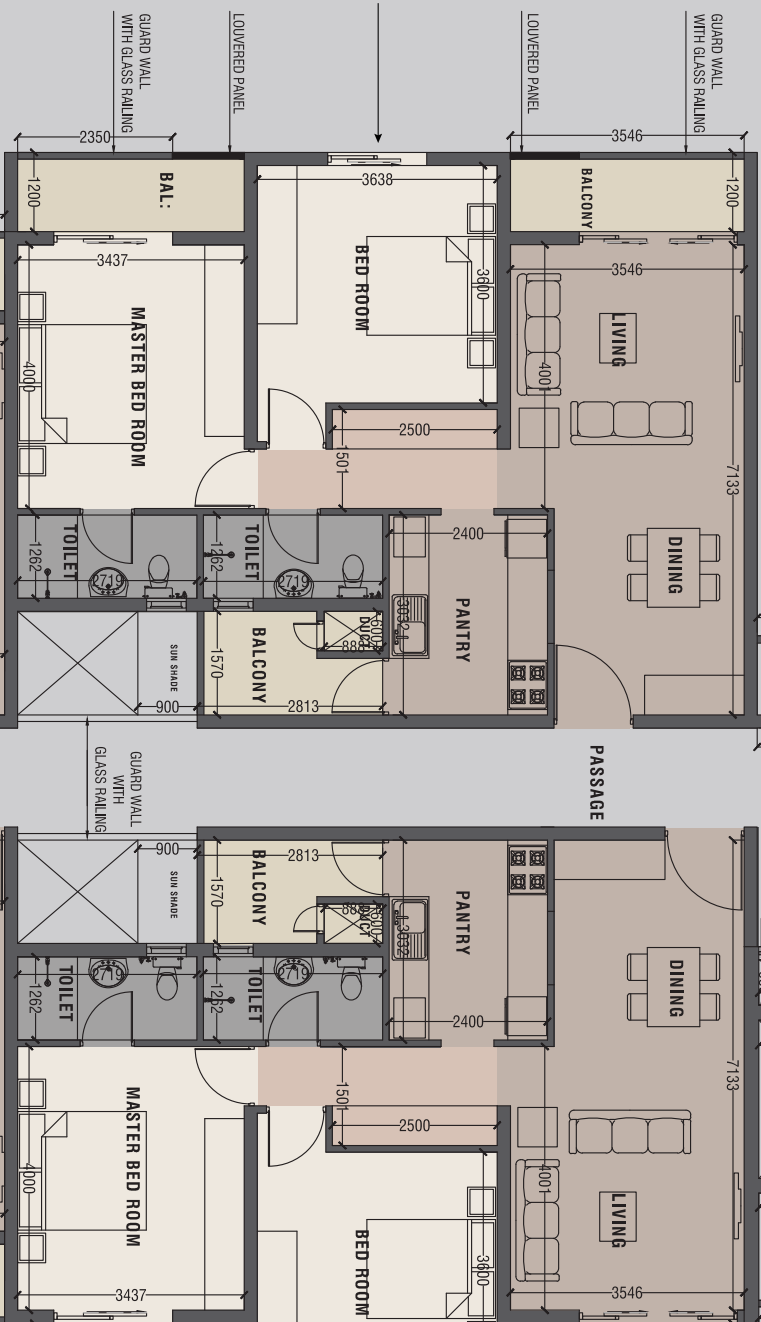
TYPE C
2 BEDROOMS
974 SQ.FT



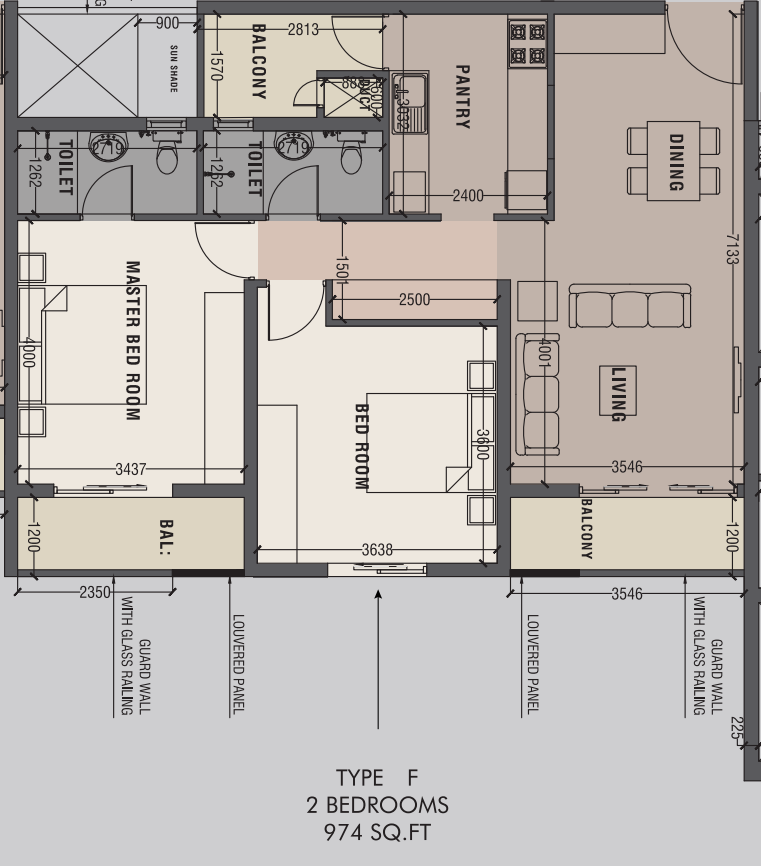
TYPE D
2 BEDROOMS
974 SQ.FT



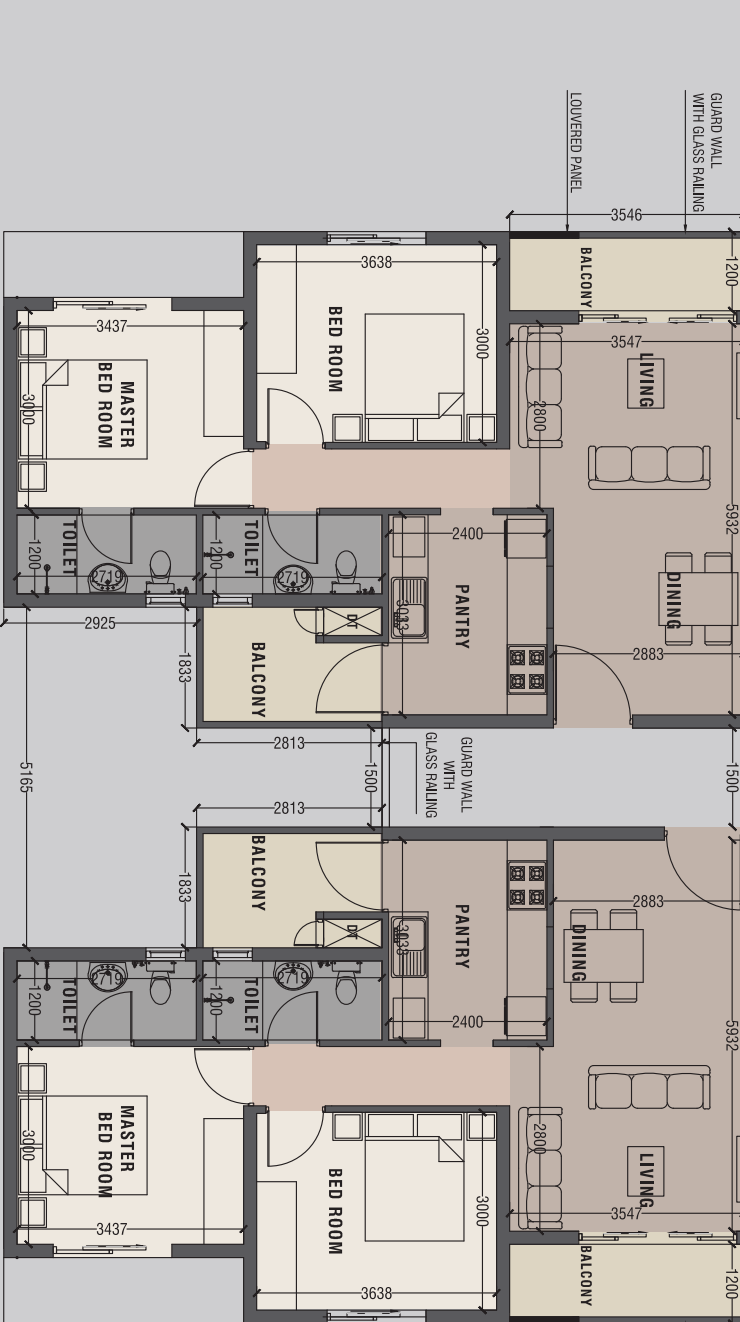
TYPE E
2 BEDROOMS
974 SQ.FT



TYPE F
2 BEDROOMS
974 SQ.FT

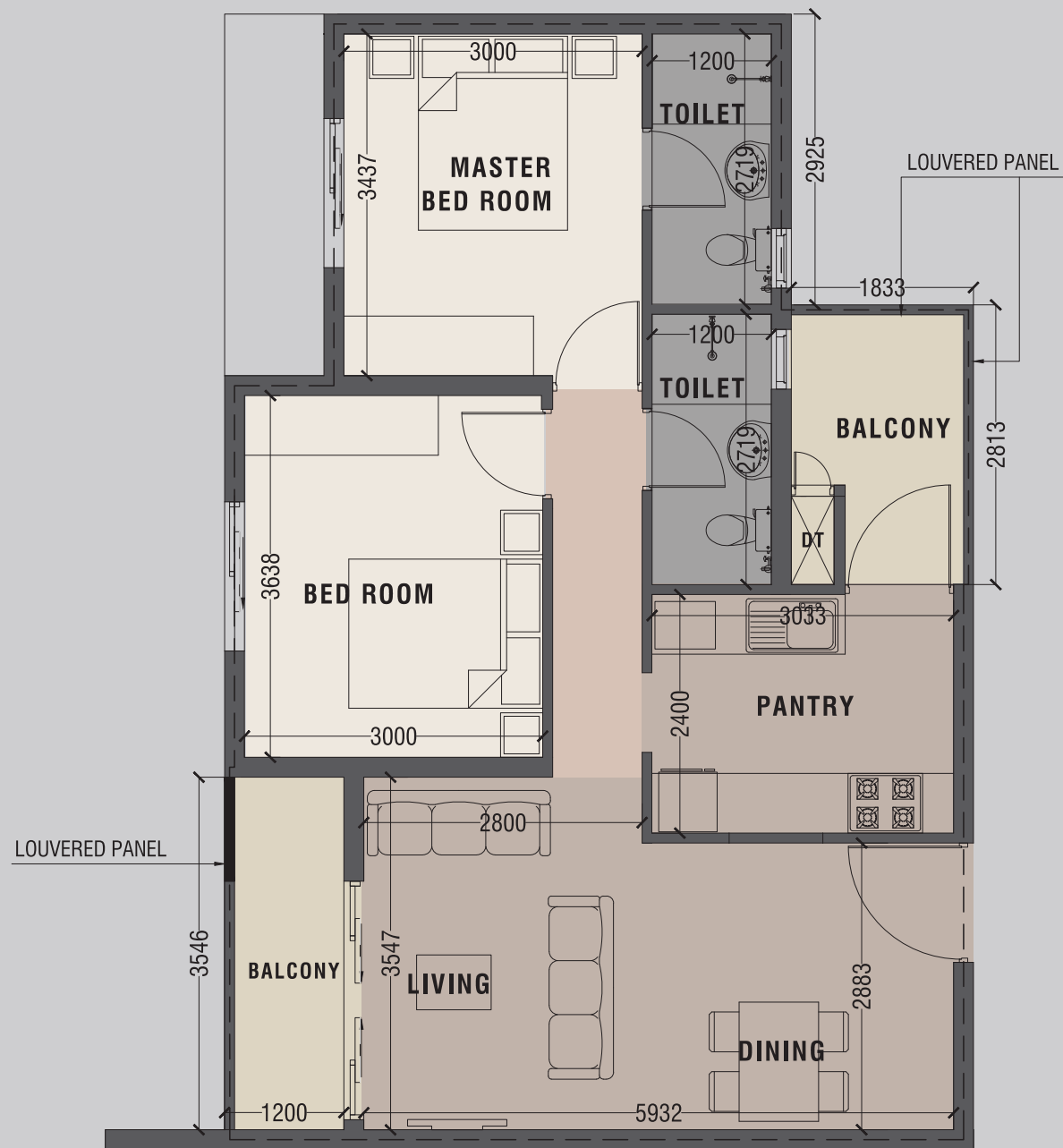


TYPE G
2 BEDROOMS
789 SQ.FT



TYPE H
2 BEDROOMS
789 SQ.FT

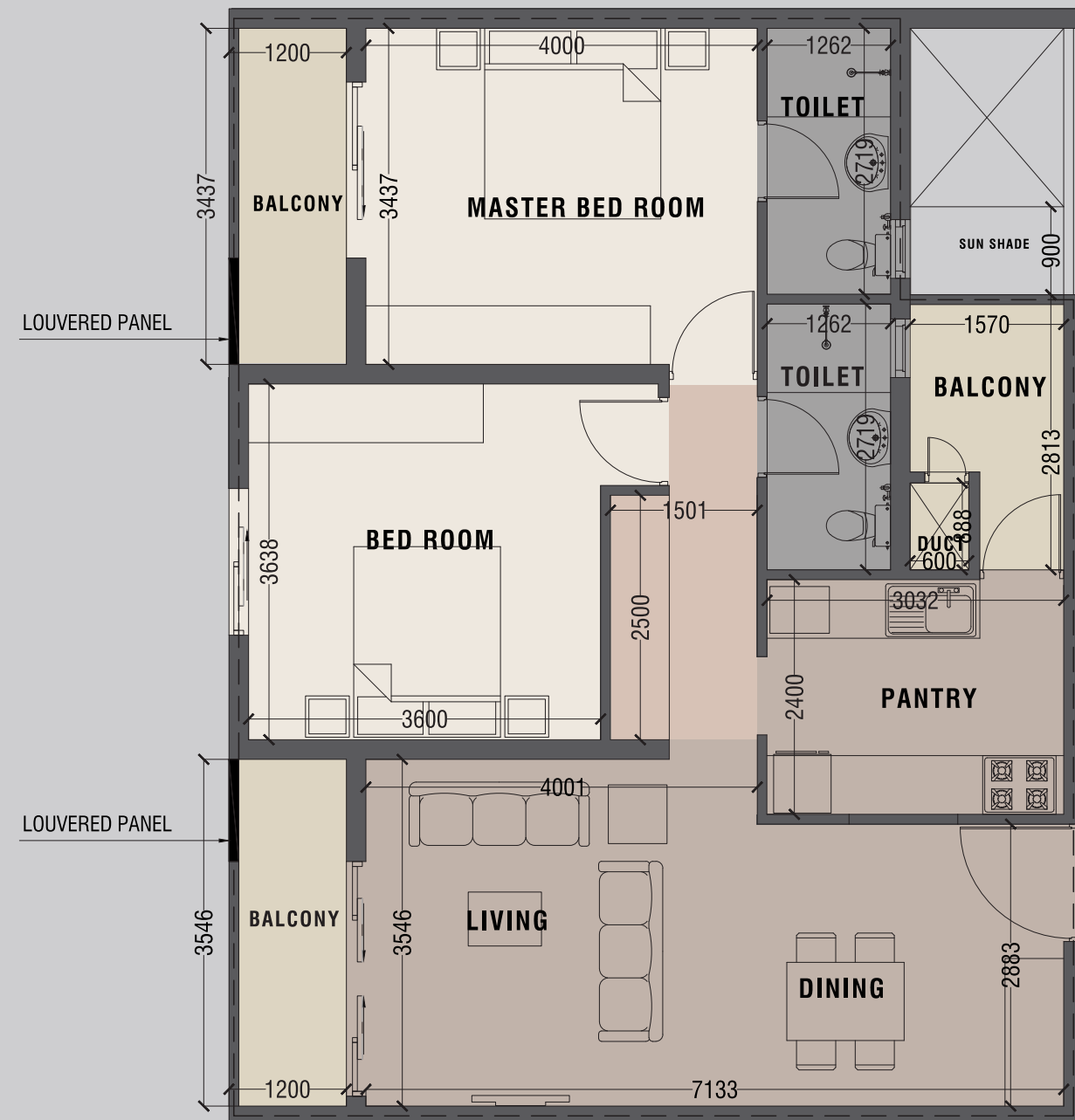
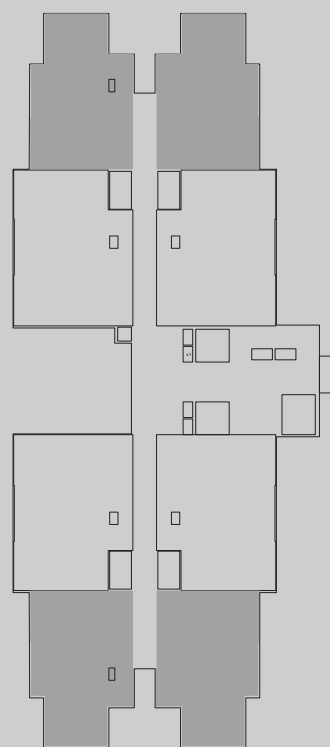




	2		01
	2		2

TYPE A
789 SQ.FT.

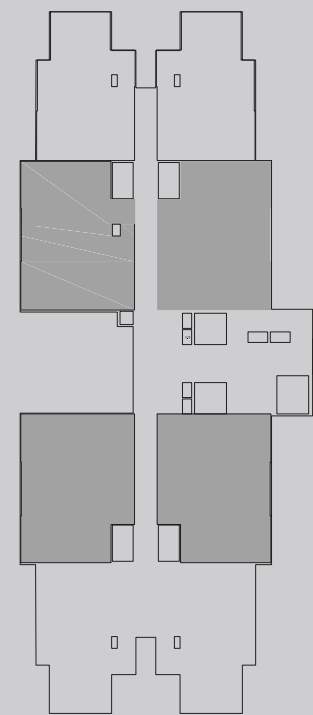
DISCLAIMER:
THIS LAYOUT IS FOR VISUAL REPRESENTATION ONLY



	2		01
	2		3

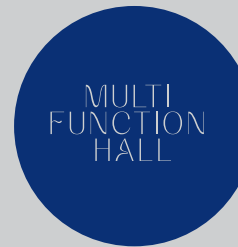
TYPE A
974 SQ.FT.

DISCLAIMER:
THIS LAYOUT IS FOR VISUAL REPRESENTATION ONLY



A Tapestry of Amenities

Indulge in a wealth of amenities that cater to your every need and desire. Whether you're seeking relaxation by the glistening waters of our man-made lake or in our serene garden retreats, staying active in our fitness centre, or connecting with neighbours in our cozy lounges and Cafe, The Colombo Border offers an array of amenities designed to enhance your quality of life.







Indulge in an aquatic haven where the waters whisper serenity, and every swim is a symphony of relaxation

Uplift your fitness routine where every workout becomes a step towards a healthier, stronger you.





— We
Bring
People
Together —

Indulge in a cozy ambiance
where each sip of coffee is a
delightful escape





Experience the ideal venue for your next gathering, equipped with state-of-the-art facilities and designed to inspire creativity and productivity.

Meeting Center



Join the vibrant community atmosphere on our rooftop, where gatherings for leisure and relaxation offer stunning views and unforgettable moments

Roof TOP





Rooted in Sustainability

Our commitment to creating a better place on earth has always been at the forefront, driving our growth

River sand has been replaced with manufactured sand for the concrete

Parking spaces for electric vehicles (EVs) and bicycles will be made available.

Waste Water Management System is utilized for irrigating landscaped areas.

Solar power lighting will be used for car park lighting.

Optimizing sunlight utilization within the building envelope will be prioritized.

Extensive landscaping will ensure that over 75% of the area is maintained as open space

Rainwater harvesting for landscaping and other watering purposes throughout the development

Our bathrooms are all naturally ventilated, eliminating the need for mechanical ventilation

LED Light fittings has been used throughout the tower to keep power consumption at a minimum



කොළඹ ෦෩ වට



THE DEVELOPER

The Maestro of Real Estate Artistry in Sri Lanka, Prime Group, is architected by its subsidiaries associating lands, homes, and condominiums. Celebrated over 28 years with unparalleled Trust and Excellence, Prime Group is driven by its Evergreen vision 'Committed to Creating a Better Place on Earth', the inspiration behind the excellence, and the passion to enliven customer anticipations. The condominium property arm of the group Prime Lands Residencies PLC is one of the trusted real estate developers in Sri Lanka that comprises over 47 apartment projects located in Colombo and the suburbs, with 42 projects fully completed and handed over to its residents.

The Grand Ward Place, the latest masterpiece landmark development that sets a new standard for ultra-luxury living in Colombo 07. The successful completion of this project, maintaining the impeccable quality and standards comparable to global luxury brands, showcases Prime Group's remarkable ability to withstand and overcome challenges fulfilling the commitment to its esteemed clients. Prime Group has been honored with the prestigious title of 'The Best Developer of Sri Lanka' awarded by Asia Property Guru; the most distinguished achievement in the local Real Estate arena for two consecutive years, along with an award for Special Recognition in CSR.

Prime Group was also accredited Among Asia's Best Brands and The Best entrepreneur in the year 2018 by Asia One magazine. With a string of recent awards and consistent acknowledgment, Prime Group has earned the reputation as the most respected real estate entity in Sri Lanka, as acknowledged by LMD magazine, alongside numerous other notable accolades.



